



# CORAL TRIANGLE INITIATIVE

ON CORAL REEFS, FISHERIES AND FOOD SECURITY

## CORAL TRIANGLE INITIATIVE ON CORAL REEFS, FISHERIES AND FOOD SECURITY PROCEEDINGS: PARTNER COORDINATION MEETING JANUARY 16-17, 2013 SANUR, INDONESIA



# **CORAL TRIANGLE INITIATIVE ON CORAL REEFS, FISHERIES AND FOOD SECURITY**

## **PROCEEDINGS**

### **PARTNER COORDINATION MEETING**

**JANUARY 16-17, 2013**

**SANUR, INDONESIA**

**Prepared for the US Agency for International Development  
By Tetra Tech under Contract No. EPP-I-00-06-00008-00**

**US CTI Support Program Document No. 02-USCTI-13**

**Cover Photo: Palawan, Philippines/L.Gallardo**

# CONTENTS

CONTENTS .....	3
ACRONYMS.....	4
INTRODUCTION .....	6
BACKGROUND.....	6
OUTCOMES SUMMARY.....	6
I.SESSION PROCEEDINGS.....	8
Day 1: 16 January 2013.....	8
OPENING SESSION .....	8
UPDATE FROM THE INTERIM REGIONAL SECRETARIAT .....	10
OVERVIEW OF PARTNER LANDSCAPE SESSION .....	16
NEEDS ANALYSIS SESSION .....	20
FACILITATED DISCUSSION TO REVIEW NEEDS ANALYSIS SESSION.....	22
Day 2: 17 January 2013.....	33
RPOA IMPLEMENTATION AND REGIONAL PRIORITIES.....	33
SESSION: NEEDS ANALYSIS .....	35
NEW PARTNER AND OPPORTUNITIES FOR ENGAGEMENT .....	39
SESSION: NEEDS ANALYSIS CONTINUED .....	41
SESSION: SUPPORT TO COORDINATING IMPLEMENTATION FOR THE REGIONAL PRIORITIES WORKSHOP (RPWS) .....	41
SESSION: PARTNER COORDINATION.....	42
APPENDICES.....	45
APPENDIXAPPENDIXAPPENDIX 1: PARTICIPANTS LIST .....	45
APPENDIX 2: MEETING OBJECTIVES AND AGENDA.....	49
APPENDIX 3: CTI-CFF PARTNER PROJECT OVERVIEW: SUMMARY TABLE OF REGIONAL CTI-CFF AREAS OF SUPPORT BY EXISITNG PARTNERS.....	53
ANNEXES (ATTACHED DOCUMENTS)	
ANNEX A: CTI PARTNER SUPPORT SUMMARY ASSESSMENT	
ANNEX B: CTI PARTNER PROJECT SUPPORT SOURCE DOCUMENTTTATION	
ANNEX C: INTERIM REGIONAL SECRETARIAT PRIORITIES PRESENTATION SUMMARY	
ANNEX D: DRAFT PRELIMINARY AGENDA FOR CTI-CFF PRIORITIES WORKSHOP 2013	
ANNEX E: DRAFT PREPARATIONS PLAN FOR CTI-CFF PRIORITY ACTION WORKSHOP 2013	

# ACRONYMS

ADB	Asian Development Bank
APEC	Asia-Pacific Economic Cooperation
BSSE	Bismarck Solomon Seas Ecoregion
CBA	Cost benefit analysis
CC	Climate change
CCA	Climate change adaptation
CI	Conservation International
COASTFISH	Sustainable Coastal Fisheries and Poverty Reduction Initiative (CTI)
CMWG	Coordination Mechanisms Working Group
CT	Coral Triangle
CT6	CT Countries (Indonesia, Malaysia, Philippines, Papua New Guinea, Solomon Islands, and Timor-Leste)
CTI-CFF	Coral Triangle Initiative on Coral Reefs, Fisheries and Food Security
CTMPAS	Coral Triangle Marine Protected Area System
CTSP	Coral Triangle Support Partnership (USAID/Asia)
DOI	Department of Interior (U.S.)
EAF	Ecosystem approach to fisheries
EAFM	Ecosystem approach to fisheries management
EBM	Ecosystem-based management
EEZ	Economic exclusive zone
FAO	Food and Agriculture Organization
FRWG	Financial Mechanisms Working Group
GEF	Global Environment Facility
GIZ	Deutsche Gesellschaft für Internationale Zusammenarbeit (German Agency for International Cooperation)
GOI	Government of Indonesia
HLFRT	High-Level Financial Roundtable (ADB)
ICM	Integrated coastal management
ICRS	International Coral Reef Symposium
IMACS	Indonesia Marine and Climate Change Support
IRS	Interim Regional CTI-CFF Secretariat
IUU	Illegal, unreported and unregulated (fishing)
KM	Knowledge management
LGU	Local government unit
LMP	League of Municipalities (Philippines)
LRFFT	Live reef food fish trade
LRFT	Live reef fish trade
M&E	Monitoring and evaluation
MCS	Monitoring, control and surveillance
MEWG	Monitoring and Evaluation Working Group
MM	Ministerial Meeting
MMAF	Ministry of Marine Affairs and Fisheries (Indonesia)
MOSTI	Ministry of Science, Technology and Innovation

MOU	Memorandum of understanding
MPA	Marine protected area
MSP	Marine spatial planning
NCC	National CTI Coordinating Committee
NGO	Non-governmental organization
NOAA	National Oceanic and Atmospheric Organization (US)
NPOA	National Plan of Action
PEMSEA	Partnership in Environment Management for the Seas of East Asia
PES	Payment for ecosystem services
PI	Program Integrator (for USAID/Asia US CTI Support Program)
PNG	Papua New Guinea
PPP	Public-private partnerships
REX	Regional exchange (US CTI)
Rio+20	UN Conference on Sustainable Development (Earth Summit 2012)
RPOA	Regional Plan of Action
SEAFDEC	Southeast Asian Fisheries Development Center
SOM	Senior Officials Meeting
SOP	Standard Operating Procedure
SSME	Sulu-Sulawesi Marine Ecoregion
STCR	State of the Coral Triangle Report
TNC	The Nature Conservancy
TOR	Terms of reference
TWG	Technical working group
UN	United Nations
UNDP	UN Development Programme
UNIDO	United Nations International Development Organization
USAID	United States Agency for International Development
US CTI	United States Support to the Coral Triangle Initiative
USG	United States Government
VA	Vulnerability assessment
VIP	Verde Island Passage (Philippines)
WB	World Bank
WG	Working Group
WWF	World Wildlife Fund

# Introduction

## BACKGROUND

The Coral Triangle Initiative on Coral Reefs, Fisheries and Food Security (CTI-CFF) held a *CTI-CFF Partners Coordinating Meeting* on January 16-17, 2013 in Sanur, Bali, Indonesia. Over 45 participants attended over the two day period representing the CTI-CFF Interim Regional Secretariat (IRS), six of the seven officially recognized CTI-CFF partners, and prospective new partners. The purpose of this two-day meeting was to discuss the status of partner programs supporting the CTI-CFF and to increase the coordination of activities for optimal impact and sustainability. Expected outcomes included the following:

- Understanding of current partner support projects, including timelines and mechanisms, and consensus on priority needs to be filled to ensure strengthening and sustainability of the CTI-CFF
- Clarification of continued and new support that partners can propose at the upcoming Regional Priorities Workshop.
- Exploration of potential new partner/donor coordination mechanisms to align future support with CTI-CFF/CT6 priorities
- Understanding of key outcomes from recent SOM8 and MM4 and how they affect current and future CTI-CFF partners
- Understanding of what it means to be a CTI-CFF Partner, including roles and the process for admission

The following sections provide a summary of the outcomes of the two-day meeting, session reports out for each day, and a series of Annexes providing additional information. Because the meeting was very much about determining needs and priorities the report uses a series of symbols to highlight needs, next steps and decisions that came out of the meeting (see box).

Symbol Key	
➤	= Need
✓	= Next step
☑	= Decision

## OUTCOMES SUMMARY

The meeting served to clarify the Partner support landscape and lay out areas of priority needs by the Interim Regional Secretariat.

From Partner report outs, it was clear that there has been and will continue to be strong engagement by the seven currently recognized partners. However, a significant level of support will be ending in September 2013 with the end of the US CTI Support Program. USAID will remain engaged with the CTI possibly through political, bilateral, and US partner agency support. WWF, TNC and CI will continue to consider CTI support a priority. All NGOs were in the process of undergoing some level of programmatic and strategic review that the Partner Meeting outputs would feed into. ADB will continue with support through its South East Asia and Pacific programs and reminded that it was critical for CTI priorities to be incorporated into ADB Country Planning efforts for activities to be supported. The Government of Australia will also continue providing robust support to the CTI particularly for the Transition process and would be incorporating meeting outcomes into its programming plans. Despite the robust current Partner support, there was strong consensus that engaging new partners and stakeholders was a priority.

The CTI-CFF needs analysis process and discussions during the course of the meeting served to emphasize a series of needs. Although the needs outlined are many, they clustered around a number of key areas which are described below.

**Ratification Process:** The IRS highlighted the need for Partner support to the countries to push forward on the ratification process for the Agreements to establish the permanent Secretariat. This includes support for mobilization of technical assistance at the country level to help facilitate political processes needed and to conduct outreach to CT6 stakeholder groups including national ministries.

**Transition Roadmap:** The key priority is to support the implementation of the Transition Roadmap for 2013 and related consultant/ staffing positions. The CMWG/FRWG need support in a range of areas including development of draft management and operations plans, business plans, the host country agreement, facilitation of CMWG and FRWG meetings including travel costs for CT6, administration and daily operations of CMWG and FRWG, etc.

**Staffing:** The key need raised repeatedly was for human resources and staffing support for the IRS, the CMWG/FRWG, and NCCs. The IRS highlighted seven key staffing positions of which most urgent are two specialists for the Secretariat, the legal specialist for the transition process, and the TWG Integrator specialist. The need for NCC Regional Coordinators to link national efforts to regional efforts was considered critical as were ministry imbeds to promote key regional RPOA priorities.

**CTI-CFF Financial Architecture and Legal Support:** The need to develop a financial architecture that is connected to outreach efforts for new donor support was emphasized repeatedly.

**Strengthening the IRS:** The IRS planned activities for 2013 are ambitious and require significant management, support and coordination. The IRS highlighted needs in the following areas:

- **Staffing:** There are currently seven consultant/ staff positions that need to be supported -some of which are partly filled at the moment but will need continued support. (See above.)
- **Global engagement:** Dr. Suseno highlighted the priority for support for the IRS to represent at international events in 2013 including APEC and CBD.
- **Logistics:** Continued support needs for travel (limited) and facilitation (country meeting prep).
- **Protocol and SOP development:** Support to IRS for developing SOPs for SOMs/MMs, other meetings. Pak Suseno highlighted this as a need. Travis noted this was something highlighted at SOM8 as a priority and that Australia has offered to support.
- **M&E System for the IRS:** The Secretariat is setting up a simple M&E system for the IRS to track progress against its own planned activities/milestones and need partner help to develop it.
- **Reporting and communications:** The IRS needs help with better communications including the progress of TWGs and present information in a simple format so that even ordinary people can understand. Support for the editing and copy editing process to consolidate reports from the CT6 into English. Support for drafting Annual, STCR and many other reports is needed.
- **Clarifying common positions:** The IRS highlighted the need to be able to communicate the status of the Coral Triangle in key areas and able to clarify common positions on key issues such as Tuna.
- **CTI-CFF M&E System implementation:** Many of the IRS reporting needs would be addressed by implementation of the CTI-CFF M&E System which is a priority.
- **TWG coordination:** There are many activities addressing RPOA thematic areas in the region e.g. MPA and there is a need to clarify what is being done and align needs. There is a need to understand the status of NPOAs which involves understanding progress not for just one sector but across all relevant sectors (e.g. fisheries is not only about MMAF but planning, mining, forestry, etc. agencies)

**New Partner Engagement:** The IRS highlighted the need for support to develop a new partner/stakeholder outreach strategy. There is a need for IRS make the application process transparent (such as posting the process in the web and making on-line application possible) and for the application process to be tested out as soon as possible.

**Planning for the Regional Priorities Workshop:** There is a need to review progress on regional priorities; demonstrate the advantages of regional engagement; promote thematic coordination and integration; and strengthen the TWGs.

**PI Exit Strategy:** The PI has been providing a significant level of operations, management, communications, logistics and technical support to the IRS and other CTI bodies. It is critical that a PI Exit Strategy be developed to identify how key functions will be addressed after the end of the US CTI Support Program in September 2013.

Although the meeting was not intended to garner commitments or serve as a decision making platform, participants did identify a number of next steps and decisions that include the following:

- The use of the Partner Project Overview Table as the standard framework and template to be used in the future, including to organize and capture Partner support;
- The development of a steering committee to accelerate staff hiring and other technical support; and
- The mobilization of the Regional Priorities Workshop Steering committee to facilitate country coordination and planning for the event; and
- New commitments by Partners to provide resources and lead on a number of activities.

# I. Session Proceedings

## Day I: 16 January 2013

### OPENING SESSION

Lida Pet Soede, WWF Coral Triangle Program Leader, extended an opening welcome on behalf of WWF and introduced Dr. Victor Nikijuluw, Indonesia National Coordinating Committee (NCC) Executive Secretary, who spoke on behalf of the Ministry of Marine Affairs and Fisheries (MMAF), Government of Indonesia (GOI). The Executive Secretary welcomed participants expressing the importance of the meeting and thanking WWF and Lida for the meeting organization. He informed of the similar meeting held the day previously which focused on partner coordination and support for Indonesia.

Dr. Suseno Sukoyono, Executive Chair of the Interim Regional Secretariat (IRS), then provided opening remarks on behalf of the CTI-CFF IRS. Dr. Suseno extended his thanks on behalf of the IRS Chair to the participants as well as Lida and the PI for assisting with preparations for the meeting which would allow an evaluation of the work done to date and a means to looking forward. Dr. Sudirman Saad's, Chairman of the IRS, regrets were extended for being unable to participate as were his wishes to relay three key messages. The first was to thank partners for their time and support to the IRS which had a wonderful year in 2012. Out of the six countries, four have signed the document to establish the permanent Secretariat. The second message was the need for the IRS, Partners and countries to continue to work together for the agreements ratification which is a two step process. Some countries can accomplish both steps with the signing of the Agreement to establish the permanent Secretariat but others cannot. The IRS looks forward to the Philippines and PNG to sign the Agreement in 2013. This has been a very significant achievement. The third message was about the business of the IRS and how it could be strengthened. The IRS would like to revisit what it has achieved and what it can do for the future. Dr. Suseno relayed his meeting with Dr. Saad, Dr. Victor and the Minister of MMAF before leaving Jakarta. The Minister expressed his gratitude to the partners and CT6. In closing, Dr. Suseno again welcomed and thanked participants.

Charlie Macpherson introduced herself as meeting facilitator; provided ground rules for the meeting; reviewed the objectives and agenda of the meeting (Appendix 2); and provided the organizational structure for discussions which was based on the CTI Interim Regional Secretariat SOM8 approved Task Areas and 2013 CTI Roadmap (see table next page). Participants then introduced themselves.



	CTI-CFF AREA OF SUPPORT	2013 CTI-CFF Road Map
<b>I</b>	<b>SUPPORT TO CTI INSTITUTIONAL CAPACITY AND COORDINATING STRUCTURES</b>	
<b>1</b>	<b>Senior Official, Council of Ministers, Leaders</b>	
1.1	CTI Leaders and Summit Meetings	• CTI-CFF Leaders Summit, October 2013
1.2	CTI Council of Minister and CTI COM Chair	
1.3	CTI Senior Officials Meetings	• SOM9, TBD
<b>2</b>	<b>Interim Regional Secretariat</b>	
2.1	Task 1. Coordinate and Support CTI-CFF Bodies and Partners	• Implement tasks given by the SOM; •Continue general support and facilitation for CTI-CFF
2.2	Task 2. Coordinate the Dev of a Regional Agenda for CTI-CFF	• Regional Priority Workshop, February 2013; •SOM9, TBD
2.3	Task 3. Conduct Communications and Outreach	• Develop outreach materials for use by all CTI partners; •Coral Triangle Day, June 2013
2.4	Task 4. Maintain Information Management Systems	• Operate CTI Website, Portal and structure, and establish transfer of materials and links from related/offered websites and portals and information systems to the CTI formal site.
2.5	Task 5. Maintain a Regional Monitoring and Evaluation System	• Facilitate Monitoring and Evaluation of the RPOA Progress and Implementation with MEWG
2.6	Task 6. Coordinate the Development of Reports	• SOM9, TBD
2.7	Task 7. Coordinate Implementation of the Transition Roadmap (Establishment of Permanent Secretariat)	• Facilitate actions in the ROADMAP toward the establishment of the permanent Regional Secretariat
<b>3</b>	<b>Governance Working Groups</b>	
3.1	Coordination Mechanisms Working Group (CMWG)	• SOM9, TBD
3.2	Financial Resources Working Group (FRWG)	• FRWG meeting, February 2013; • 1st CT Business Council Meeting, March 2013; •SOM9, TBD
3.3	Monitoring & Evaluation Working Group (MEWG)	• M&E System Manual Meeting, February 2013; •SOM9, TBD
<b>4</b>	<b>Thematic Technical Working Groups</b>	
4.1	Seascapes TWG	• Seascape TWG, January and August •Regional Priority Workshop, February 2013
4.2	EAFM TWG	• Regional Priority Workshop, February 2013
4.3	MPA / Threatened Species TWG	• Regional Priority Workshop, February 2013
4.4	CCA TWG	• 3rd CCA Regional Exchange/TWG CCA, May •Regional Priority Workshop, February 2013
4.5	Capacity Development / Cross-Cutting TWG	• Regional Priority Workshop, February 2013
<b>5</b>	<b>National CTI Coordinating Committees</b>	
5.1	Indonesia	• SOM9, TBD
5.2	Malaysia	• SOM9, TBD
5.3	Papua New Guinea	• SOM9, TBD
5.4	Philippines	• SOM9, TBD
5.5	Solomon Islands	• SOM9, TBD
5.6	Timor-Leste	• SOM9, TBD
<b>II</b>	<b>SUPPORT TO RPOA/NPOA IMPLEMENTATION</b>	
		<ul style="list-style-type: none"> <li>• Priorities in NPOA identified and annual work plans developed</li> <li>• Specific funding needed for specific activities (e.g., project level) and funding gaps identified</li> <li>• Funding secured to implement annual work plans, particularly identified priorities</li> <li>• Implementation of actions in NPOAs</li> <li>• Active participation in thematic working groups •Regional Priority Workshop, February 2013</li> </ul>
<b>6</b>	<b>G1: Priority seascapes designated and effectively managed</b>	• Seascape TWG, January and August 2013 •Regional Priority Workshop, February 2013
<b>7</b>	<b>G2: EAFM and Other Marine Resources Fully Applied</b>	• LRFFT Intergovernmental Forum, Feb 2013; •REX 4 on EAFM, April 2013; •Reg Priority Workshop, Feb 2013
<b>8</b>	<b>G3: MPAs Established and Effectively Managed</b>	• 4th MPA REX, March 2013 •Regional Priority Workshop, February 2013
<b>9</b>	<b>G4: Climate Change Adaptation Measures Achieved</b>	• 3rd CCA Regional Exchange/TWG CCA, May 2013 •Regional Priority Workshop, February 2013
<b>10</b>	<b>G5: Threatened Species Status Improving</b>	• Regional Priority Workshop, February 2013
<b>11</b>	<b>Cross-Cutting Themes / Other</b>	• Regional Priority Workshop, February 2013
11.1	Regional Business Forum	• 3rd Regional Business Forum, March 2013
11.2	Local Governance network	• Local Government Network Meeting, December 2012
11.3	Integrated Toolkit	• Regional Priority Workshop, February 2013

## UPDATE FROM THE INTERIM REGIONAL SECRETARIAT

Dr. Suseno introduced the session, *Update from the Secretariat on Priorities, Progress and Plans for 2013*, providing an accompanying PowerPoint presentation. The presentation covered: progress on the signing of the establishment agreements; the status of the CTI-CFF Secretariat building; and the status of the establishment of a CTI-CFF Bank Account. It also covered IRS plans for 2013; summary CTI-CFF IRS tasks for 2013; overview of CTI-CFF IRS operations and capacity; working with Partners; guiding principles for setting priorities; SOM8/MM4 Decisions and priorities; and the CTI-CFF 2013 Roadmap and calendar of activities (See Table 1).

The RPOA was reviewed along with guiding principles as the framework for the CTI-CFF. Dr. Suseno emphasized that CTI as a regional organization is very young. It is the only regional organization in the world which consists of countries governments, the NGO community, and donor agencies. The CTI-CFF is unique also in that it is currently working through the partnership of MMAF, a government institution, even though there is no host country agreement yet in place. This is an amazing show of faith and partnership. Dr. Suseno emphasized that the heart and soul of the CTI was networking and expressed the need to use the network to do lobbying, not only outside the region, but inside and with the member countries using MMAF as an example.

Dr. Suseno expressed that the beauty of the CTI-CFF is that it is a collaborative approach. Through it CTI CFF is sharing common values and agree to promote cooperation. CTI CFF has received much help from partners but this partnership must be further fostered.

A key question that needs to be addressed is the impact of the CTI-CFF after 2009-2012 as there are 150 actions under RPOA. There is also a great need to recognize the CT6 countries for their work on the five goals. There are different dimensions of these goals including biodiversity, livelihoods, destructive fishing, resources, etc. and different perspectives about these dimensions across the CTI. These dimensions need to be harmonized. This is about exploited resources – there is great demand and new markets are emerging such as for LRFFT.

Dr. Suseno reviewed the IRS tasks. In Malaysia in November 2013 at SOM8/MM4, seven task areas for the IRS were approved. This requires a significant amount of management, support, and coordination including time management, resources management, staffing management, etc. These were tasks given to the IRS and with Partner help they can be accomplished.

The Progress of the signing of the establishment documents was reviewed. Four ministers have signed the document. PNG and the Philippines are waiting for the political conditions to be met as well as the cost-benefit analyses (CBA) to be completed. Indonesia is approaching its Ministry of Foreign Affairs to complete the ratification process including the Host Country Agreement in 2013.

The plans for the CTI-CFF Secretariat Building in Manado were presented. It is close to completion with opening anticipated in February 2013.

An update on the CTI-CFF Secretariat bank account was provided. The account has been opened in Bank Mandiri, Indonesia under the name of CTI CFF Regional Secretariat. Account numbers for USD and IDR currencies, and SWIFT Code were provided.

IRS Task activities for 2013 agreed to at SOM8/MM4 were reviewed as were the newly developed Partner criteria which include:

- Demonstrates commitment, and capability and integrity to be a major supporter over a sustained period of time for the implementation of CTI RPOA and NPOAs.
- A commitment to work with the Regional Secretariat, NCCs and other Partners in planning and providing support towards achieving the shared vision of the CTI-CFF.

- A commitment to work with the CT6 and other Partners to help to successfully develop the CTI-CFF as a regional forum, and to help plan, coordinate and mobilize efforts to achieve successful implementation of the CTI-CFF RPOA and NPOAs.

Dr. Suseno emphasized again that the CTI-CFF is about working together and networking. There has been much investment in the CTI-CFF but cooperation needs to be further opened to others. The beauty of CTI-CFF is that it will last because it has received high level political commitment from leaders. Even if the leaders change, the initiative will continue. With the help of Partners, the CTI-CFF has been introduced to the world stage at Rio+20 where the idea of the blue economy has been launched. Dr. Suseno thanked Partners for their efforts.

The IRS's guiding principles for setting CTI-CFF priorities were reviewed and include the following:

- Align with RPOA;
- CTI-CFF SOM8 and MM4 Decisions (particularly those in need of follow up);
- Roadmaps and Calendar of Activities 2013; and
- Inputs from partners and stakeholders.

Dr. Suseno reviewed SOM8/MM4 decisions and priority actions which are outlined in the tables below. Dr. Suseno also highlighted the need for other assistance in the following areas:

- Dissemination of information and communication efforts;
- Legal and financial support including drafting of financial architecture;
- Support for threatened species;
- Advice for signing of agreements;
- Assistance with drawing in new partners;
- Assistance for development of an M&E system to track IRS progress;
- Assistance with managing TWG in order to make information accessible to even lay readers;
- Assistance to review work of TWGs and understand the broader efforts contributing to it (there are many MPA activities for example across the region);
- Further support for LRFFT and CCA activities;
- Support to facilitate closer collaboration with SSME;
- Support for assistance with alignment of activities;
- Assistance to educate and clarify terms (for example, many people confuse EAFM, MPA and seascapes. The CI publication on Seascapes was helpful towards this end);
- Getting greater clarification on the status of NPOAs as the foundation of the RPOA;
- Assistance with drawing attention to the CTI-CFF through CT day – another accomplishment of SOM8/MM4;
- Support to stick to the CTI-CFF Regional Business Dates in the roadmap;
- Support for planning and conducting SOM9 which the IRS is working to identify a date for;

Dr. Suseno ended the session by thanking participants and requesting Partners to provide advice and guidance to address priorities.

**Table 1 CTI-CFF SOM8/MM4 Decisions and Priority Actions**

<b>2. Interim Regional Secretariat (Ref. Annex C)</b>	
Decision	Priority Actions
Strengthen and increased capacity of IRS	<b>2.1</b> Mobilize resources and partners to further strengthen IRS capacity toward agreed Permanent Regional Secretariat structure
Intensifying dissemination of information for enhanced coordination with CT countries.	<b>2.3</b> Strengthen capacity to intensify dissemination of information
<b>2. Contribution for the operation of Regional Secretariat (Ref. Annex C)</b>	
Decision	Priority Actions

Government of Indonesia establishes appropriate arrangements.	(3) Legal and financial assessment and exploration to enable Gol receiving the contribution
	Enhancement of other CT6 to contribute
<b>3.1 Coordination Mechanisms Working Group (Ref. Annex C)</b>	
<b>Decision</b>	<b>Priority Actions</b>
The procedure of the signing of the Agreement on the Establishment of the Regional Secretariat of the CCTI-CFF ('Agreement') by Ministers	<b>3.1</b> Expedite the signing of the agreement by the remaining CT6
To continue implementing the Roadmap to a Permanent Regional Secretariat agreed at the 3rd Meeting of the Council of Ministers (MM3)	<b>2.7</b> Strengthen IRS capacity to meet Permanent Regional structure
Communications Strategy Design and 2013 Work Plan for the completion of the CTI Communications Strategy by 2013	<b>2.3/2.4</b> Implement the strategy and alignment to all WGs programs
The criteria and processes for the admission of new CTI Partners	<b>3.1</b> Disseminate the criteria and protocol and identify new potential partners
Interim Regional Secretariat's Operations Plan for 2013.	<b>2.</b> Implement the plan and strengthen IRS capacity
<b>3.2 Financial Resources Working Group (Ref. Annex C)</b>	
<b>Decision</b>	<b>Priority Actions</b>
Need to conduct a feasibility study to develop a Regional Financial Architecture for effective funding mechanism in CTI-CFF.	<b>3.2</b> Conduct the study and alignment to FR WG program
Draft the Terms of Reference to be finalized and approved by April 30, 2013.	<b>3.2</b> Expedite the finalization of ToR
<b>3.3 Monitoring and Evaluation Working Group (Ref. Annex C)</b>	
<b>Decision</b>	<b>Priority Actions</b>
Endorsed the adoption of the CTI-CFF M&E System with provisions for modification of indicators by respective Thematic TWGs for continuing improvement.	<b>3.3</b> Implement the system
Recognized the need for NCCs to review the national and regional SCTR by November 30, 2012 prior to publication.	<b>5</b> Completion of Regional SCTR and assigning teams (within NCCs) to record and incorporate all WGs reports and accomplishments
Recognized the Coral Triangle Atlas (CT-Atlas) as integral to the implementation of the CTI-CFF M&E System. As such, the countries are encouraged to share relevant data with CT-Atlas through appropriate mechanisms, i.e. Memorandum of Understanding (MOUs).	<b>3.3</b> Completion of M&E System (minus the TWGs which have not endorsed its indicators)
<b>Decision</b>	<b>Priorities Actions</b>
Future reports from TWGs should incorporate and highlight country plans and accomplishments pertains to each working groups themes	<b>(5)</b> Assign teams (within NCCs) to record and incorporate all WGs reports and accomplishments
<b>(4.1) Seascapes WG (Ref. Annex C)</b>	
<b>Decision</b>	<b>Priority Actions</b>
Establish a "General model for sustainable management of seascapes"	<b>(4.1)</b> Seascape WG Meeting – Feb and Aug 2013 <b>(RM)</b>

Conduct a "rapid seascape assessment" of the entire CTI region	<b>(4.1)</b> Seascape WG Meeting – Feb and Aug 2013 <b>(RM)</b>
Develop seascape management and investment plans for the candidate seascapes, and mobilise financial resources for implementation of those plans	<b>(4.1)</b> Seascape WG Meeting – Aug 2013 Australia <b>(RM)</b>
Support seascape capacity-building and learning	<b>(4.1)</b> Regional Exchange in November 2013
Conduct periodic monitoring and evaluation of priority seascape programs	<b>(4.1)</b> Seascapes Working Group meeting (March 2014)

#### 4.3/8 Marine Protected Areas WG (Ref. Annex C)

Decision	Priority Actions
Coral Triangle Marine Protected Area System (CTMPAS) Road Map clarifying the short-medium- and long-term action plans	<b>(4.3)</b> Review the CTMPAS Framework and send inputs to the Chair of MPA-WG by January 30, 2013.
	<b>(4.3)</b> Launch the CTMPAS Pilot (Nov to Jun 2013)
	<b>(4.3)</b> Recruit Priority Sites and Initiate Programs (Jun to Sep 2013)
	<b>(4.3)</b> Expand Action Plan and Implement Roadmap to 2020 (Sep to Dec 2013)
	<b>(4.3)</b> Regional Exchange in November 2013
	<b>(4.3)</b> Seascapes Working Group meeting (March 2014)

#### (4.3/10) Threatened Species (Ref. Annex C)

Decision	Priority Actions
Endorses the request of the MPA TWG Chair (Philippines) to provide a renewed mandate to the MPA TWG's to serve as Threatened Species Working Group.	<b>(4.3)</b> Alignment of Threatened Species Program into MPA WG
Notes the TWG's focus on MPA activities, the Meeting encourages the TWG to also speed up activities pertaining Threatened Species	<b>(4.3)</b> Alignment of Threatened Species Program into MPA WG

#### (4.4/9) Climate Change Adaptation WG (Ref. Annex C)

Decision	Priority Actions
CCA Indicators shall be further reviewed by the NCCs as part of the process of continuing improvement	<b>(5)</b> A series of review sessions in the NCC action plan
3rd CCA Regional Exchange in May 2013 to be hosted by Timor-Leste in May 2013 with support from US CTI Support Program <b>(RM)</b>	<b>(4.4)</b> Disseminate the information and its preparatory sessions to mobilize quality participation
CCA TWG activities pertaining to the pilot-testing of CCA guide across the CT region	<b>(4.4)</b> Dissemination of CCA guide

#### (6) Sulu Sulawesi Marine Ecoregion (SSME) (Ref. Annex C)

Decision	Priority Actions
Implementation of the Tri-National SSME Comprehensive Action Plan	<b>(4.1/4.3)</b> Alignment to Seascape WG and MPA WG
Local Government Network Forum and Executive Course	<b>(3)</b> Alignment to all WG programs

## (7) Ecosystem Approaches to Fisheries Management (Ref. Annex C)

Decision	Priorities Actions
Need for common regional framework to manage fisheries resources	Adoption of EAFM Regional Framework Establishment of multi-stakeholders forum for Live Reef Fish Food Trade (LRFFT) Finalization of EAFM regional guidelines Review and finalization of EAFM indicators Conduct of the 4th EAFM Regional Exchange (REX 4) in April 2013 (possibly in Bali) <b>(RM)</b>

## II (Ref. Annex II)

Decision	Priority Actions
Prototype Mapping Tool of projects in the Coral Triangle - Southeast Asia	<b>(3.3)</b> Alignment to MEWG
Development of Marine Conservation Center – in Indonesia (as Coral Triangle Training Center).	<b>(4.3)</b> Alignment to MPA WG for capacity building program and promotion of the center (f.i. At market place forums)

## II (Ref. Annex C)

Decision	Priority Actions
Integrating Coastal Resource Management and Planning in the Coral Triangle: <i>Practical Guidelines for Marine and Coastal Managers and Conservation Practitioners</i>	<b>4.3</b> Alignment to MPA and Seascape WG Programs
Integrating Coastal Resource Management and Planning in the Coral Triangle: <i>Practical Guidelines for Marine and Coastal Managers and Conservation Practitioners</i>	<b>4.3</b> Alignment to MPA and Seascape WG Programs

**CTI-CFF Roadmap and Calendar of Activities for 2013 (Put references here: MM4 Decision)**

Date and Venue	Activity	Objectives/Description/Proponent	Follow up
On-Going	<b>Implementation of National Plans of Action</b>	<ul style="list-style-type: none"> <li>• Depending on the Status of each CT6 NPOA:</li> <li>• Priorities in NPOA identified and annual work plans developed</li> <li>• Specific funding needed for specific activities (e.g., project level) and funding gaps identified</li> <li>• Funding secured (national or external) to implement annual work plans, particularly identified priorities</li> <li>• Implementation of actions in NPOAs</li> <li>• Active participation in thematic working groups</li> </ul>	NCC NCC NCC NCC NCC NCC & IRS
On-Going	<b>Activities of Interim Regional Secretariat</b>	<ul style="list-style-type: none"> <li>• Facilitate Monitoring and Evaluation of the RPOA Progress and Implementation with MEWG</li> <li>• Operating the CTI Website, Portal and structure, and establish transfer of materials and links from related/offered websites and portals and information systems to the CTI formal site.</li> <li>• Develop a set of outreach materials for use by all CTI partners on the CTI to reach out to future partners and the public, including some regular updating report and newsletter to all key CTI stakeholders.</li> <li>• Facilitate actions in the ROADMAP toward the establishment of the permanent Regional Secretariat</li> <li>• Implementing tasks given by the SOM</li> <li>• Continue general support and facilitation for CTI-CFF</li> </ul>	IRS  IRS  IRS  IRS IRS  IRS
January, 16 - 17, Bali Indonesia	Partners Meeting	<ul style="list-style-type: none"> <li>• Consolidate and aligning partner support and facilitation for RPOA and NPOAs</li> <li>• Continue scoping for new partners for engagement</li> <li>• Proponent: USAID</li> </ul>	NCC&IRS  NCC&IRS
January 31 - February 1, Bangkok, Thailand	LRFFT Intergovernmental Forum	Proponent: USAID and SEAFDEC	NCC&IRS
January 31 - February 1, Bangkok, Thailand	Seascope Working Group Meeting	<ul style="list-style-type: none"> <li>• Review and consolidate Seascope activities and supporting projects to ensuring that they are complementary and cost-effective, particularly to their alignment RPOA and NPOAs</li> <li>• Proponent: Australia</li> </ul>	NCC & IRS
February 20 - 22, Manado, Indonesia	Regional Priority Workshop	<ul style="list-style-type: none"> <li>• Prioritize and support the regional actions</li> <li>• Proponent: USAID</li> </ul>	IRS
February, Manila Philippines	Financial Resources Working Group	<ul style="list-style-type: none"> <li>• To finalize and approve TOR for a feasibility study to develop a Regional Financial Architecture for effective funding mechanism in CTI-CFF</li> <li>• To draft the implementation plan of FR Architecture</li> <li>• Proponent: FRWG</li> </ul>	NCC & IRS
February, Manila Philippines	M&E System Manual Meeting	<ul style="list-style-type: none"> <li>• Establish the MEWG and review status of the ad-hoc activities</li> <li>• To review the trial implementation of M&amp;E System Manual</li> <li>• MEWG (focal point)</li> </ul>	NCC & IRS

March 11-15, Solomon Islands (TBD)	4th MPA REX	<ul style="list-style-type: none"> <li>•Finalize the CTMPAS Criteria</li> <li>•Management effectiveness protocols</li> </ul>	NCC & IRS
25 – 27 March Bali – Indonesia	3rd Regional Business Forum and 1st CT Business Council Meeting	<ul style="list-style-type: none"> <li>•To celebrate and share examples of successful public-private partnerships in the Coral Triangle countries, with business to government to NGO networking</li> <li>•To consider steps the CTI-CFF can take to forward the Blue Economy</li> <li>•Establishment of CT Business Council and conducting its 1st Meeting</li> <li>•Proponents: Host, Indonesia; WWF</li> </ul>	NCC & IRS  NCC & IRS
April Bali, Indonesia	REX 4 on EAFM	<ul style="list-style-type: none"> <li>•Details to be confirmed</li> </ul>	NCC & IRS
May 29 - 31 Timor Leste	3rd CCA Regional Exchange/TWG CCA	<ul style="list-style-type: none"> <li>•To review and share the recent activities in the CT6 countries related to CCA practices</li> <li>•Proponents: CCA WG&amp; US CTI</li> </ul>	NCC & IRS
June 9 All countries	Coral Triangle Day	<ul style="list-style-type: none"> <li>•Celebration of Coral Triangle Day</li> <li>•Each country is encouraged to celebrate within that week. Activities may include beach clean-up, beach party etc.</li> <li>•Proponents: CT6 Government and Partners</li> </ul>	NCC
August	Seascope TWG	<ul style="list-style-type: none"> <li>•Progress of Seascapes work plan, sustainable model for seascope, seascapes assessment</li> <li>•Proponent: Seascope WG</li> </ul>	NCC & IRS
TBD	SOM 9th	Incorporates CTMPAS M&E protocol for the region, CTMPAS Framework Launching	NCC & IRS
October 1st or 2nd week	CTI-CFF Leaders Summit	In conjunction with the APEC (pending agreement with APEC organizing committee)	NCC & IRS

## OVERVIEW OF PARTNER LANDSCAPE SESSION

Partners were requested to provide a macro-level, five-minute overview of their activities and work.

### WWF OVERVIEW

Lida expressed her appreciation for the meeting and to USAID and other Partners who were advocating for it. WWF plans its programs using a two year timeframe and is now looking at another 1.5 year of its program to address regional priorities. WWF is looking for the IRS to provide input.

WWF was particularly interested in the meeting because will help WWF plan how to move forward and prioritize. Also, WWF Indonesia is in the final stages of completing its five year conservation program strategy which will start in the next fiscal year which begins in July 2013. This is the time where the Indonesia WWF team is testing whether the plan fits gaps and complements what others are doing so it is very useful.

At the national level, WWF's focus is mostly on the areas that the NPOAs are prioritizing. At the regional level, what is relevant is to discuss components. WWF's regional program is focused on bringing enabling conditions to government. So it focuses and will continue to focus on the private sector, bringing them to table to take responsibility for regional action. WWF will always have this component.



WWF also likes to be innovative so that it challenges itself so that there is not a business as usual assumption moving forward. It organizes think tanks and brings together a range of people to think in new ways to approach issues. WWF will continue to take this forward.

Lida informed that the meeting was also timely for WWF, as most funding is invested at the regional level. WWF is investing US\$10 to 11 million per year in the CT for regional and national level (Indonesia, Philippines, Malaysia, and the Pacific) activities. WWF has three major sources of funding which includes the WWF network and its members for which the CT is priority. The second source is foundations, most of them the typical ocean supporting foundations from the U.S. and Europe. The third source of funds comes from global aid agencies including USAID and UNIDA. For most of those donors it takes about 1.5 years to fund raise, so if in this process you see role for WWF to, it can fund raise but needs to start immediately. Lida confirmed that WWF would continue to support the CT “forever” and at all levels.

## U.S. GOVERNMENT OVERVIEW

Juniper O’Neill, USAID/RDMA Regional Environment Office Deputy Director, expressed pleasure that the whole USAID delegation was able to participate and thanked the PI, the Secretariat and WWF for hosting and organizing the meeting. USAID is pleased to have been a Partner of the CTI for many years. There is much coordinating done by phone and she expressed her appreciation to everyone for their patience over the years. Juniper also highlighted that as a result, it will be no surprise that the US CTI Support Program is ending in September 2013. It has been a five year program that includes agreements with NOAA, CTSP and the PI.

USAID views the meeting as an opportunity to review the activities it has supported and which will end in September and to understand how those activities align with priorities. USAID’s Regional Development Mission for Asia (RDMA) mission is currently undergoing a process of developing a five year Regional Development Cooperation Strategy which every USAID mission has been asked to undertake. For USAID/RDMA the process will be completed in fall 2013. USAID will not be able to move forward with new programming until the strategy is approved at the highest level. USAID has reviewed what it may go forward with in the interim, which includes new Interagency Agreements with NOAA and the Department of Interior (DOI) for which there is flexibility to extend support of their expertise. NOAA has done this for years and DOI, including the National Park Service and many other agencies, is looking to engage as a new partner. USAID/RDMA has been working closely in planning with bilateral missions as well, to explore how the new Interagency Agreements can contribute to bilateral USAID Country Development Cooperation Strategies over the next five years. USAID/RDMA will continue its analytical work over the next several months to determine how it can continue regional level and bilateral support.

Alfred Nakatsuma, who previously worked with USAID Indonesia, is now the new RDMA/Regional Environment Office Director. He has been very involved in marine and fisheries issues and has a long history with CTI.

There is much to accomplish by September 2103. USAID expects to stay at 100% engaged until the end of its Program. The CTI is an unprecedented initiative. There is nothing else that exists like this in the world, and USAID wants to capture successes and lessons learned.

Juniper also highlighted the substantial marine and coastal resources conservation programs of many USAID bilateral missions, including in the Philippines, Indonesia, Timor-Leste and the Pacific. Many of these programs support and advance the goals of the CTI at national levels.

Celly Catharina, USAID Indonesia Marine Program Specialist, provided a quick overview of the USAID Indonesia program as an example of bilateral programming. The program is from 2009-2014 and is designed around CTI goals. A new strategy is being developed for 2014-2019. There are many priorities and the Mission is looking to see how it can build one comprehensive program. It will reach out to the Secretariat to meet for further discussions.

## CONSERVATION INTERNATIONAL OVERVIEW

Niquole Esters expressed her personal thanks and thanks on behalf of Monique and Frazer to WWF, the Secretariat and the PI for hosting and organization of the meeting. In terms of partner landscape, CI works at the regional level and national level in four countries. At the regional level its main areas of focus are internal expertise, technical assistance, and capacity development focused on integrating five goals. Its efforts in EAFM focus on building a regional framework to meet at national and local levels. As the end of the US CTI Support Program approaches, CI is reassessing its approach after five years of the program. It has developed a draft strategy that is available and will be shared with Partners and the Secretariat to be further developed into an implementable work plan. Part of the strategy includes capture of work not officially under the CTI. CI has worked many years in the region and would like to get relevant work recognized so that it can coordinate and organize better. In terms of future work, CI will continue to work in the countries where it is currently engaged and across the CTI looking to build new partnerships with different funding bases.

## ASIAN DEVELOPMENT BANK OVERVIEW

Marilou Drilon, ADB Economist, informed that ADB's work is linked to the 2020 Strategy and that CTI member countries are also members of the ADB multilateral bank. There are also donor countries which are also member countries of ADB. ADB's support to CTI is linked to goals for inclusive economic growth; environment sustainable growth which includes climate change; and accelerating regional cooperation which fits squarely with CTI. ADB has ongoing projects with CTI including knowledge management (KM) which will continue through February. A key effort has been the State of the Coral Triangle Report (STCR) which is an assessment on the state of the CTI not just relaying information about biodiversity but also statistical quantitative measurements. The reports are developed by the countries and are close to being completed. ADB has also set up a website for KM which has a significant amount of traffic.

The second CTI ADB related project is for the Pacific which has been ongoing for a year. Simon Tiller is the project team leader and based in Australia. For the Pacific project, covers PNG, Solomon Islands, and Timor-Leste as formal members of CTI, plus Vanuatu and Fiji as part of the Global Environment Facility Pacific Alliance for Sustainability. These two countries have similar goals and targets to CTI and could later apply as formal members of CTI. ADB also started the Coastal and Marine Resources Management in the Coral Triangle - Southeast Asia Project (CTI-SEA). The CTI-SEA project budget is US\$12 million whereas the Pacific project budget is US\$15 million. There is also strong support from the Australian Government for the Pacific. The Inception Workshops for CTI-SEA project are done and field implementation will commence in the first quarter of 2013. The CTI-SEA project will run for four years while that of the Pacific programs will go on for five years. CTI-SEA provides support the CTI Secretariat and it includes several sub-projects on ecosystem approach to fisheries management (EAFM), strengthening/establishment of new marine protected areas (MPA), addressing IUU fishing, alternative livelihoods, and climate change adaptation (CA).

ADB is an agent of GEF. It has been implementing an integrated coastal resources project in the Philippines. For Indonesia, CTI-Coral Reef Rehabilitation and Management Project (COREMAP) is in the design phase and is targeted to commence in 2014 for a 5-year implementation period. Also as part of its commitment, ADB is undertaking a financial architecture feasibility study which includes the proposal to set up a Business Development Unit. The Partner meeting outcomes will feed into ADB's activities and the work it is undertaking in its programs.

The Government of Japan is financing two ADB projects on alternative livelihoods in the coastal areas in Indonesia and the Philippines. It also has a large program in the Pacific for CC resilience. There is a very large program for PNG which alone has a budget of US\$30 million. There is a smaller regional strategic program for CC resilience which is linked to the strategic objectives of the CTI.

ADB's programming work is undertaken through the development of Country Business Plans. If what is being proposed for the CTI is not in the Country Business Plans it will not be funded. On the procurement side, ADB has procurement guidelines it uses. Most projects are bid out on competitive basis. Funds are usually allocated through consulting services and include technical assistance; capacity building strengthening; staffing positions; etc.

## GOVERNMENT OF AUSTRALIA OVERVIEW

Travis echoed the appreciation of other Partners for the meeting which is helpful for Australia and provided an overview of how Australia's support has evolved since its commitment at 2009 Leaders Summit. The initial commitment was for AUD2 million with the promise that it would evolve. The commitment was raised to AU5\$ million and then at RIO+20 raised by a further AUD8 million.

There are four key aspects of Australia support and strategic intent which include: 1. Support for regional governance and institutions; 2. Support for NPOAs; 3. Seascapes support, and 4. Ongoing support with the AUD8 million. Regional governance efforts have focused on investing in institutions with the rationale continuing to be that the CTI is a very strong platform to get things accomplished - as Dr. Suseno observed, the commitment to the CTI is endorsed by leaders. Australia has put a focus on regional institutions because it is critical to have a functioning Secretariat and financial architecture to solidify and sustain work, and enabling environment. Australia is concerned that if the institutions are not sufficiently strong, the initiative will not be able to accomplish what it needs to.

Australia's NPOA related support is directed towards the Solomon Islands, PNG and Timor-Leste and has been going on for 2.5 years amounting to approximately AUD3 million. Australia made a deliberate decision at the outset that though it would support regional governance but would not emphasize support for the regional agenda partly because the USG was directing its support to this area and also with the idea that there would be space to support the regional agenda after foundational governance issues had been addressed.

National bilateral scale activities are directed towards increasing momentum and establishing foundations. There are a number of activities that are information based to inform longer term programs as well as demonstration activities which can be scaled up.

Seascapes support is just getting underway and was announced at RIO+20. This support is not part of AUD8 million. It is aimed to provide regional support and allow Australia to explore engagement at this level. Australia's interest is not so much about establishment of new seascapes but the building of awareness, capacity and support for multi-objective planning with ecosystem based approaches using similar concepts to CTSP's approach. Australia would like to work with Seascapes Technical Working Group (WG) and are talking to CI about supporting regional exchanges and the WG. Support would also be directed at the national and trilateral level and is more about planning investments on an integrated basis, with the aim of providing a foundation for future investments. Australia's priority geographies are the southern Coral Triangle and the Bismarck Seas.

The AUD8 million dollar committed at RIO+20 covers four years though Travis informed it still needed to be clarified the actual timeframe covered and where and how the investment will be made. Unlike previous support, Australia will look at it as a package taking a long term approach. Travis relayed that he looked forward to further engaging with participants to provide input into Australia's process and confirmed that the Partner Meeting and the upcoming Regional Priorities Workshop (RPW) in February would be important to inform its process.

## THE NATURE CONSERVANCY OVERVIEW

Alan extended his thanks on behalf of TNC and like others was happy to be part of the meeting. TNC is also planning for the next five years of its programming. It is rethinking the CTI and developing a new business plan to engage with the CTI on what is most strategic moving forward. In September 2012, TNC developed a new approach, thinking based on a series of visions.

By 2015, TNC will mobilize funding to increase capacity for conservation priorities for the Coral Triangle region. The key is bringing more science to the region which is one of the strengths that TNC brings. TNC has been doing work on MPA management and is looking to build capacity for longer term in the CT countries. TNC has about 100 employees and anticipates staff will grow to support regional engagement. It is looking at a broader regional engagement and is currently fundraising for that. The focus is on MPAs, MPA management, and marine spatial planning, but it is also looking at fisheries, climate change, and integrated coastal management. There is a global priority on fisheries, climate change and disaster risk reduction which TNC is trying to bring more into the CT.

TNC's key focus of future work is anticipated to be on the Coral Triangle Marine Protected Area System (CTMAPS) and management effectiveness. Another key theme is the M&E aspect of CTI. TNC has had an active role in developing indicators and the system, and sees that as a key priority. As part of this it is trying to build up better spatial database housed in the Coral Triangle Atlas based in WFC which it will continue to support.

TNC is here for the long term. It has worked in the region for 20 years and doesn't plan on going anywhere soon. It is also keen on partnerships. Alan remarked on how impressive partner coordination already is and would also like to continue support for that.

## **NEEDS ANALYSIS SESSION**

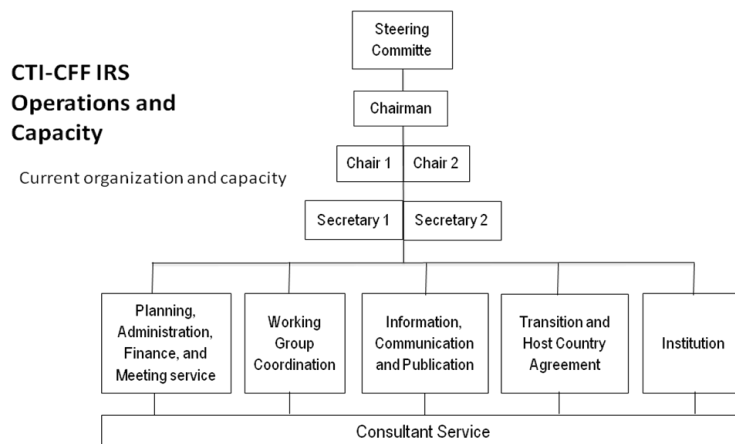
Charlie provided an overview of the session referencing the handouts including Partner Areas of Support Table [Appendix 3] Summary of the Needs Analysis [Annex A]; and the Partner Project Summary Tables [Annex B] which serve as source documentation for the needs analysis.

Peter provided a PowerPoint presentation reviewing the approach to the analysis, key findings and questions. (The PowerPoint presentation served as the basis for facilitated discussion in later sessions and will be referenced at appropriate points in subsequent sections of this report.)

## **SECRETARIAT PRESENTATION OF NEEDS**

Eko Rudianto, Secretariat Director, provided a needs analysis undertaken by the Secretariat. He presented the new IRS Structure which mimics the permanent Secretariat but with different titles. The Chairman will be supported by Chairs and Secretaries. Eko informed that he would serve as Chair 1 with Hendra Siry serving as Secretary 1 and that external affairs, meeting planning, website management, TWG coordination will be managed under Chair 1. Mr. Anang Noegroho, Director Center for International Marine and Fisheries Cooperation, will serve as Chair 2 with Perry Inkiriwang and Agung Tri Prasetyo serving as Secretary 2. Chair 2 will address institutional affairs, transition and host country agreement. The IRS will be staffed by Indonesian government officials who will allocate 30% to 40% to the CTI. To make this organization run, the IRS proposes support as follows:

**Fig 1: CTI-CFF IRS Operations and Capacity -Current organization and capacity**



**Fig. 2 Secretariat Staffing Support**

To make this organization run, the IRS proposed the staffing support presented in Figure 2 which includes seven consultant support positions some of which are currently being addressed by Partners.

The GOI has confirmed its support for:

- office space in Jakarta, MMAF;
- secondment of government officials on a part-time basis;
- the provision of an annual budget of \$150,000 (which has been provided for the past seven years) of in-kind support for meetings, travel, cost, honoraria;
- the provision of a permanent regional secretariat building.

Proposed Partners Support Needed	Proposed Capacity
Program Planning Specialist	Experience in Int'l Organization Program Planning, Short-Medium-Long term based on RPOA
Finance Specialist	Experience in Int'l/Reg Organization financial management
Working Group Coordinator	Coordinating WG activities through regular meeting, project implementation
Communication Strategy Specialist	Delivering positive message of all CTI-CFF activities to wide-range of stakeholders, beneficiaries
Int'l Legal Drafter	Drafting Host Country Agreement within the Government of Indonesia, assisting CT6 ratification process
Human Resources Specialist (temporary)	Recruitment process, human resources mapping, analysis and needs,
Int'l Organization & Management Specialist	Drafting rules and procedures for Organization
Monitoring & Evaluation Specialist	Experience in monitoring & evaluation activities

Eko confirmed that building for the IRS is very large and that the Regional Secretariat will use only a small part. Space can be offered to Partners for offices.

Eko also presented a PowerPoint on the Transition Roadmap conveying Dr. Anang Noegroho's regrets at not being able to participate and his highest appreciation to Partners.

Since 2010 partners have been providing support to the Coordination Mechanisms (CMWG) and Financial Mechanisms Working Groups (FRWG). The Government of Australia has provided significant support to the CMWG and ADB to the FRWG including development of the Transition Roadmap for development of Roadmap for the financial resources architecture. Support has also been provided for CBAs, costing of priorities, and the conduct of the High Level Financial Resources Round Table (HLFRT). The US Government has provided technical, operations and facilitation support to conduct meetings including travel and other costs.

There is much work to be done in 2013. IRS Chair 2 as lead of the CMWG will lead the implementation of the Transition Plan.

Eko reviewed SOM decisions and identified areas where continued support would be needed by Partners including:

- the development of draft management and operation plans, business plans, the host country agreement, etc.
- facilitation and operations support for CMWG and FRWG meetings including travel costs;
- resources to strengthen the day to day operations, administrative and management needs of the CMWG and FRWG;
- expertise to be assigned to CT6 countries to support the ratification process;
- outreach and facilitation support to engage a broader stakeholder group including CT6 ministries;
- assistance for the recruitment process;
- human resources expertise.

Discussions and Question and Answer followed the presentation and included the following:

Q: Marilou asked if the IRS structure had been presented to the CT6 and highlighted that there are a number of non-traditional partners such as GIZ who have been supporting CTI related efforts for years.

A: Eko confirmed the IRS structure had been presented and that the structure of the permanent Secretariat was agreed to at SOM. He agreed that many non-traditional partners had been providing support to the thematic goals and it was important to get more information about them.

Q: Cathy Plume expressed her gratitude for the GOI for its extensive support through the IRS and asked how that burden could be shared by other countries.

A: Eko responded that engagement was welcome and that an avenue for this might be through the consultant support extended by partners. The seven consultants could be staffed from CT6 countries.

Eko confirmed that the IRS would continue to be based in Jakarta and the permanent Secretariat in Manado. In the future the permanent Secretariat may have a branch office in Jakarta with MMAF. The building in Manado should be available for use in September 2013. The GOI is still thinking of how to maximize the rest of the building. Regarding the contributions it is very clear by the COM Chair, that even though countries give money now, the IRS cannot use it. If a country provides contribution this year, and bank account is open, it can only serve as a savings-type account.

Eko confirmed that in every formal meeting including SOM and WG meetings, the CT6 base agreement has been that every country should pay by itself to participate in meetings. This is not fully happening so far but that is the agreement reached in the Solomon Islands several years ago.

## **FACILITATED DISCUSSION TO REVIEW NEEDS ANALYSIS SESSION**

A summary of the needs analysis session which spanned the afternoon of Day 1 is outlined below.

### **I. SENIOR OFFICIALS, COUNCIL OF MINISTERS, LEADERS**

- I. Senior Officials, Council of Ministers, Leaders**
- I.1 Leaders and Summits**
- I.2 Council of Ministers and CTI COM Chair**
- I.3 Senior Officials Meetings**

<b>Summary of Current Support</b>	<ul style="list-style-type: none"> <li>▪ Technical assistance for event preparation</li> <li>▪ Limited staffing support for SOM/MM preparation</li> <li>▪ Partner participation at events</li> <li>▪ Periodic funding of CT6 country participation (US)</li> <li>▪ Coordination and operations support</li> </ul> <p>US, TNC, WWF, ADB</p>
<b>Questions for Future Support</b>	<ol style="list-style-type: none"> <li>1. Will the COM Chairs continue to need support?</li> <li>2. What kind of support?</li> <li>3. Who can provide that?</li> <li>4. Will the Secretariat continue to need support for these types of meetings?</li> <li>5. What kind of assistance? Who can provide that?</li> </ol>

Question: From the Secretariat’s perspective, does this need continued support and what type of support:

- **Need:** Eko confirmed that it was anticipated that continued support would be needed. Eko relayed that for SOM and MM, the host country is responsible for preparing venue and all meeting arrangements. The IRS has the responsibility to assist with preparation of materials. The travel arrangements for CT6 should be shouldered by each country. But this is not really happening and it is not clear what the arrangement will be in the future. With the IRS experience, the Partners in some countries help with preparation of delegations and travel and this arrangement is unlikely to change.
- **Need:** Dr. Suseno reflected that the challenge was to accelerate the timeline to confirm a venue and get participants to come. There is a need to speed up communication as getting high level ministers to accommodate last minute decisions is very difficult. It is also a challenge to mobilize the correct people from the CT6. With changing senior officials, participants are often insufficiently briefed or informed. There is a need to develop better “Plan B-s” and develop Standard Operating Procedures (SOP) and Manuals (e.g. “How do to a SOM”).
- **Need:** Eko reconfirmed the importance of supporting the preparation of countries to attend meeting. Even though the IRS sends documents one or two months before an event, countries vary in their approaches for consultations and meeting preparations. Partners can be a big help with this.

The following resources currently available were confirmed:

- Travis appreciated the observations and reconfirmed Australia’s offer of support to assist with development of SOPs and other management support after that November’s CMWG meeting at SOM8.

Question: Lida asked whether the Council of Ministers would consider CTI-CFF meetings in conjunction with other meetings such as APEC, CBD, Rio+20 etc. which might make it easier for WWF to support.

- Dr. Suseno responded that this is a very strategic question and confirmed that is the intention. With Partner support the IRS was successfully able to do this at Rio+20 and the 12<sup>th</sup> International Coral Reef Symposium (ICRS). This is a priority for APEC for which the IRS is working with Ministry of Foreign Affairs and Ministry of Interior. There are time limitations with APEC that MMAF is trying to work around.
- Rene Acosta, USAID/RDMA, reminded of the practical issues to organize events such as APEC where multiple national ministries are often involved; where delegation structures differ; and the levels of government that must be engaged often vary. Using those events to raise the CTI-CFF profile can be very useful but challenging and resource intensive to implement.
- Lida agreed that it could be a challenge but extended WWF support to help facilitate that. The point is that the CTI-CFF was a result of a leaders’ declaration and all the ministries in a country should provide support as a result.

- Travis reflected on the resource intensiveness on such profile-raising efforts in light of the many other competing priorities and encouraged a more strategic and holistic approach to such engagement.

## 2.0 INTERIM REGIONAL SECRETARIAT

### 2.1 COORDINATE AND SUPPORT TO CTI-CFF BODIES AND PARTNERS

#### 2. Interim Regional Secretariat

##### 2.1 Coordinate and Support CTI-CFF Bodies and Partners

<b>Summary of Current Support</b>	<ul style="list-style-type: none"> <li>▪ Staffing support (Coordinator, Comms Specialist; Admin Staff; Marine and Coastal Resources Mgt Specialist (US, ADB)</li> <li>▪ Secondment of Partner staff (US)</li> <li>▪ Technical support including coordination and document drafting (Operations Plan; CTI Annual Report, etc.) and other management support</li> <li>▪ Further staffing support offered (Australia, ADB, US)</li> <li>▪ Partner Coordination: facilitation, meetings support, calls, reporting (US)</li> </ul> <p>US, WWF, ADB</p>
<b>Questions for Future Support</b>	<ol style="list-style-type: none"> <li>1. Will the positions currently funded continue to need funding beyond 2013?</li> <li>2. What kind of continued TA will still be needed?</li> <li>3. Will the Secretariat need continued support for the development of Annual Secretariat Operations and Communications plans?</li> <li>4. Will the Secretariat continue to need support for coordination/ communications of CTI events?</li> <li>5. Will the Secretariat continue to need support for Partner Coordination?</li> </ol>

Question: From the Secretariat's perspective, does this need continued support and what type of support:

- **Need:** Eko stated the most important question was No. 1 Staffing support. Many multilateral initiatives take years if not decades to become truly sustainable. If the CTI-CFF can create a trust fund, then the Secretariat will remain active but if it has only base country contribution, the money will be used up for operations. There should be a large model or continuous trust fund established.
- **Need:** The need is to get funding mechanism set up as rapidly as possible and for continued Partner support to staff positions.
- **Need:** Marilou suggested that the IRS needs to develop proposals with longer term plans and benchmarks which are what donors are interested in. Dr. Suseno confirmed that this was a challenge considering the interim status of the IRS but suggested the 2013 Secretariat Operations plan could serve this purpose.
- **Need:** Dr. Suseno also highlighted that the IRS needs support to implement the 2013 Secretariat Operations Plan which is very ambitious. It is currently beyond the capacity of the IRS.
- **Need:** Eko highlighted that Marilou's point has been made before, but the secretariat does not have capacity to do this. It needs two or three experts to help us write big proposals for activities beyond 2013. There are no new partners because there is no marketing. The IRS needs support for proposal writing to reach out for new partners as a US exit strategy.
- **Need:** Dr. Suseno confirmed that the new organizational chart proposed by the Secretariat follows from MM4 outcomes and anticipation future needs. It is what the IRS is working with but not set in stone and open for discussion.

The following resources currently available were confirmed:

- Marilou highlighted ADB is supporting two positions with one in place that will be funded for 24 person-months each.
- Lea Tamayo, ADB CT Pacific suggested that the IRS consider secondment, internships and volunteer programs as a way to augment staffing.



Next steps were proposed as follows:

- ✓ Next step: A small group meeting to be held by key partners offering staffing support and IRS to develop a plan for determining positions, timeframes for funding, recruitment, etc.
- ✓ Next step: As part of the staffing plan and long term analysis for IRS to transition, an inclusion of IRS's actual capacity to understand what it can manage including key actions the IRS part-time staff prioritizes
- ✓ Next step: Review of IRS proposed organizational chart by partners.

## 2.2 COORDINATE THE DEVELOPMENT OF A REGIONAL AGENDA FOR CTI-CFF

### 2. Interim Regional Secretariat

#### 2.2 Coordinate the Development of a Regional Agenda for CTI-CFF

<b>Summary of Current Support</b>	<ul style="list-style-type: none"> <li>▪ Development and implementation of the CTI Roadmap Agenda</li> <li>▪ Secretariat support to lead coordination on the development and implementation of the agenda</li> <li>▪ Funding, coordination, operations and technical support for conduct and follow-up on Roadmap Events including Regional Exchange meetings and programming (US, Others)</li> </ul> <p>US, WWF, TNC</p>
<b>Questions for Future Support</b>	<ol style="list-style-type: none"> <li>1. Can we confirm commitment of partners to continue to coordinate with the Secretariat on the planning and conduct of CTI regional and RPOA events beyond 2013?</li> <li>2. To what extent will the Secretariat continue to need support to fulfill its coordination role? What kind of support?</li> <li>3. What level of funding is needed to develop and implement the CTI Roadmap ? What regional meetings are most necessary?</li> </ol>

Question: From the Secretariat's perspective, does this need continued support and what type of support:

- Need: Dr. Suseno confirmed there would be continued need for help for scheduling and planning. In addition, the IRS would need continued help for all the functions the PI has been supporting including website management. There is a need to develop an Exit Strategy which will outline who/how these functions will be supported after September 2013.
- Need: Travis highlighted that there are some barriers to recruiting from other countries and that the people hired for the IRS might not go to the permanent Secretariat. Australia would be very supportive of hiring non-Indonesians but the practicalities for short term assignment make it more challenging.

The following resources currently available were confirmed:

- Travis stated that Australia has offered support and found it challenging to mobilize. For its part, Australia wishes to support the Transition Roadmap which will involve a range of technical support but it could involve putting someone in the Secretariat to drive that. That person could help with other tasks. Australia's support would be framed under supporting transition, but that individual could also help the Secretariat. In the context its offer of support, it would help to get a better understanding the most important priorities after the transition roadmap.

Next steps were proposed as follows:

- ✓ Next step: Dr. Suseno proposed the development of an Exit Strategy for after the PI's departure including guidelines for identifying who can provide support including hosting of the website and all other activities to be handed over from the PI.

## 2.3 CONDUCT COMMUNICATIONS AND OUTREACH SUPPORT

### 2. Interim Regional Secretariat 2.3 Conduct Communications and Outreach

<b>Summary of Current Support</b>	<ul style="list-style-type: none"> <li>▪ Staffing support (Comms Specialist 50% time; Communications and Outreach Officer position) (US)</li> <li>▪ CTI-CFF Communications Outreach and Strategy development and implementation (US, Australia)</li> <li>▪ Internal CTI communications support (US)</li> <li>▪ CTI website, portal, workspace development and management, including content development and management (US)</li> <li>▪ Event communications preparation and support at events (e.g. roadmap events, ICRS, RIO+20, etc.) (US, WWF)</li> <li>▪ Communications to brand Coral Triangle and promote/communicate advancement of RPOA goals (WWF, US)</li> </ul> <p>US, WWF</p>
<b>Questions for Future Support</b>	<ol style="list-style-type: none"> <li>1. Does the Secretariat anticipate it will continue to need some level of communications support after 2013? What level?</li> <li>2. What event communications support will the Secretariat and CTI need and how will it communicate that?</li> <li>3. Who will manage the website including content after the PI leaves?</li> </ol>

Question: From the Secretariat's perspective, does this need continued support and what type of support:

- Need: Dr. Suseno confirmed there would be continued need for help for scheduling and planning. In addition, the IRS would need continued help for all the functions the PI has been supporting including website management. There is a need to develop an Exit Strategy which will outline who/how these functions will be supported after September 2013.

The following resources currently available were confirmed:

- Peter Collier, Program Integrator COP, confirmed the PI has funding for a communications position through September 2013.

## 2.4 MAINTAIN INFORMATION MANAGEMENT SYSTEM

### 2. Interim Regional Secretariat 2.4 Maintain Information Management Systems

<b>Summary of Current Support</b>	<ul style="list-style-type: none"> <li>▪ Library, contact list, partner database management including related Secretariat website management (US)</li> <li>▪ KM related Technical Assistance to Secretariat and NCCs (ADB)</li> </ul> <p>US, ADB</p>
<b>Questions for Future Support</b>	<ol style="list-style-type: none"> <li>1. Does the Secretariat anticipate it will need info management support beyond 2013? What kind? Who can provide it?</li> <li>2. What further KM technical assistance be needed? What kind? Who can provide it?</li> </ol>

Question: From the Secretariat's perspective, does this need continued support and what type of support:

- Need: Dr. Suseno confirmed there would be continued need for help for scheduling and planning. In addition, the IRS would need continued help for all the functions the PI has been supporting including website management. There is a need to develop an Exit Strategy which will outline who/how these functions will be supported after September 2013.

The following resources currently available were confirmed:

- Marilou highlighted that ADB's KM support is ending in February 2013 for Asia but a concept will be developed to include further support through Pacific funding so KM support

from ADB will be continuing. Moreover, the CTI-SEA project is providing a KM position to be assigned in the IRS.

## 2.5 MAINTAIN AN REGIONAL MONITORING AND EVALUATION SYSTEM

### 2. Interim Regional Secretariat 2.5 Maintain a Regional Monitoring and Evaluation System

<b>Summary of Current Support</b>	<ul style="list-style-type: none"> <li>▪ Support to the MEWG (see below) including staffing, secondments, technical assistance and regional meeting support (US)</li> <li>▪ Support to Secretariat to support coordination of MEWG efforts (US, WWF)</li> <li>▪ The MEWG has proposed the Secretariat serve as the home and management lead for the CTI M&amp;E System</li> </ul> <p>US, WWF, TNC</p>
<b>Questions for Future Support</b>	<ol style="list-style-type: none"> <li>1. Will the Secretariat be in the position to do take over management of the M&amp;E System by the end of 2013?</li> <li>2. What support or alternate solution does it propose for management?</li> <li>3. Should other organizations or partners be involved in further developing and maintaining the system?</li> </ol>

Question: From the Secretariat's perspective, does this need continued support and what type of support:

- **Need:** Dr. Suseno confirmed there was a need for an M&E System for the Secretariat and the database and various libraries the PI has managed would continue to need to be supported.
- **Need:** Alan highlighted that the M&E referenced was related to the M&E for the RPOA but recognized the Secretariat's need for its own M&E.
- **Need:** Eko raised that it should be the CTI Secretariat who manages the CTI-CFF M&E System but it needs to figure out how to do that. It would be a challenge if this is delegated to a Partner or another country.
- **Need:** Alan confirmed that the design has always been for the CTI-CFF M&E system to reside in the secretariat but the key need is to operationalize this.

## 2.6. COORDINATE THE DEVELOPMENT OF REPORTS

### 2. Interim Regional Secretariat 2.6 Coordinate the Development of Reports

<b>Summary of Current Support</b>	<ul style="list-style-type: none"> <li>▪ Technical Assistance for CTI Annual, Progress and STCR reports preparation and development (ADB, US)</li> <li>▪ Meeting report preparation and development support (US)</li> </ul> <p>US, ADB</p>
<b>Questions for Future Support</b>	<ol style="list-style-type: none"> <li>1. Will the Secretariat need support for development of the next CTI Annual and RSTRC reports? What kind? Who can provide it?</li> </ol>

Question: From the Secretariat's perspective, does this need continued support and what type of support:

- **Need:** Hendra stated that the Secretariat needs support for reporting especially with editing and the copy editing process. Consolidating reports for the CT6 into English is a big challenge so continued support is very much needed.
- **Need:** Dr. Suseno confirmed that continued support was needed for the Annual and the STCR reports among others. There are many reporting needs including NCCS reports, annual reports, Roadmap implementation reports, M&E reports, TWG reports, and other communications and outreach reports. However, different people need to be tasked with

these jobs – they cannot be covered by a single individual. Reporting is strategic and the blood and soul of what the CTI does. There needs to be a specific goal/effort for this.

## 2.7 COORDINATE IMPLEMENTATION FO THE TRANSITION ROADMAP

### 2. Interim Regional Secretariat 2.7 Coordinate Implementation of the Transition Roadmap (to Permanent Secretariat)

<b>Summary of Current Support</b>	<ul style="list-style-type: none"> <li>▪ Technical Assistance for Transition Plan development and implementation (Australia, earlier US)</li> <li>▪ Meeting package and operations support for CMWG meetings (US)</li> <li>▪ Planned staffing support to implement transition plan (Australia)</li> </ul> <p>Australia, US, TNC, WWF</p>
<b>Questions for Future Support</b>	<ul style="list-style-type: none"> <li>➤ To what extent is it anticipated the Transition Plan will be implemented by the end of 2013?</li> <li>➤ What continued support to implement the plan will be needed?</li> <li>➤ How could increased levels of support be provided and mobilized?</li> </ul>

Question: From the Secretariat’s perspective, does this need continued support and what type of support:

- Need: Eko confirmed that the original Transition Roadmap is very clear and outlines support needs.

The following resources currently available were confirmed:

- Travis re-confirmed Australia’s provide support for this. The roadmap from SOM8/MM4 is very clear. Australia could provide bridge support for communications after the US departure but it may have less flexibility in some areas such as meeting support.

## 3. GOVERNANCE WORKING GROUPS

### 3.1 COORDINATION MECHANISMS WORKING GROUP (CMWG)

#### 3. Governance Working Groups 3.1 Coordination Mechanisms Working Group (CMWG)

<b>Summary of Current Support</b>	<ul style="list-style-type: none"> <li>▪ Technical Assistance to CMWG including advisors/specialists (Australia)</li> <li>▪ Support for implementation of Transition Roadmap (Australia, US, WWF, TNC)</li> <li>▪ Meeting assistance: planning and prep; operations support - CT6 travel and participation costs (US)</li> <li>▪ Partner participation at CMWG meetings</li> </ul> <p>Australia, US, WWF, TNC</p>
<b>Questions for Future Support</b>	<ol style="list-style-type: none"> <li>1. To what extent will continued support to CMWG be needed after 2013?</li> <li>2. How should support be provided? How should partner support provided to the Secretariat and to the CMWG on Transition Plan be coordinated?</li> </ol>

Question: From the Secretariat’s perspective, does this need continued support and what type of support:

- Need: Travis pointed out that supporting the Transition Plan is the job of the CMWG and how much more support is needed beyond 2013 will depend on how far they get.
- Need: Eko reviewed the staffing plans for IRS and highlighted the priority is for the staff for the transition process. The biggest priorities identified were the specialists for the Secretary positions and the Legal Specialist for the transition process.

The following resources currently available were confirmed:

- Travis highlighted that Australia can provide the CMWG and FRWG expertise required. He will need to work with Pak Anang to determine priority positions. Australia’s envisaged

model for support is of a team of experts that are available to provide tech assistance with an individual in the Secretariat on a full time basis to help coordinate transition work.

### 3.2 FINANCIAL RESOURCES WORKING GROUP (FRWG)

#### 3. Governance Working Groups

#### 3.2 Financial Resources Working Group (FRWG)

<b>Summary of Current Support</b>	<ul style="list-style-type: none"> <li>▪ Technical Assistance to FRWG including advisors/specialists (ADB, Australia, WWF)</li> <li>▪ Meeting assistance (planning and prep; operations support e.g. CT6 travel, venue, etc.) (US)</li> <li>▪ Support for conduct of Regional Business Forums 1,2, 3 (WWF, US)</li> <li>▪ Support for development of Regional Business Council (WWF)</li> <li>▪ Preparation of documents including in-country costing exercises for HLRFT Sustainable Finance PES, Feasibility on Financial Architecture (ADB)</li> <li>▪ Partner participation at events</li> </ul> <p>ADB, WWF, US, TNC, Australia</p>
<b>Questions for Future Support</b>	<ol style="list-style-type: none"> <li>1. To what extent will continued support to FRWG be needed?</li> <li>2. How should support be provided?</li> </ol>

Question: From the Secretariat's perspective, does this need continued support and what type of support:

- Need: Support was anticipated to be needed until the permanent Secretariat is established.

The following resources currently available were confirmed:

- Marilou confirmed ADB support for the FRWG will continue through 2016.
- Lida informed WWF will continue support for the regional business forum which will turn into the Regional Business Council. If the newly launched Business Council decides to continue with Regional Business Fora, WWF will continue doing this.
- Travis confirmed that US support provided to date for meetings would be absorbed by Australia.

### 3.3 MONITORING & EVALUATION WORKING GROUP (MEWG)

#### 3. Governance Working Groups

#### 3.3 Monitoring & Evaluation Working Group (MEWG)

<b>Summary of Current Support</b>	<ul style="list-style-type: none"> <li>▪ Technical Assistance to MEWG including advisors/specialists (US, TNC)</li> <li>▪ Staffing support including secondments (US)</li> <li>▪ Meeting assistance (planning and prep; travel, venue, etc.)</li> <li>▪ Support for development of RSTCR and national STCRs ( meetings, drafting, printing, launch, etc.) (US)</li> <li>▪ Support to Secretariat to support coordination of MEWG efforts (US)</li> <li>▪ NCC and TWG support to develop M&amp;E indicators and advance RPOA and NPOA goals (US, TNC, WWF)</li> <li>▪ Funding for development and management of CT Atlas (TNC, US)</li> <li>▪ Partner participation at events</li> </ul> <p>US, TNC, WWF, ADB</p>
<b>Questions for Future Support</b>	<ol style="list-style-type: none"> <li>1. The MEWG has proposed the Secretariat serve as the home and management lead for the CTI M&amp;E System. Will the Secretariat be in the position to do so by the end of 2013? If not, what support/alternate solution does it propose for management?</li> <li>2. Will the Secretariat and CT6 continue to need support for RSTCR and national STCR updates (see IRS Task 6)</li> <li>3. To what extent will continued support to MEWG be needed?</li> <li>4. Will other organizations/partners be need to help maintain the system?</li> <li>5. How should support be provided?</li> </ol>

Question: From the Secretariat's perspective, does this need continued support and what type of support:

- **Need:** Eko highlighted the most critical need was a Technical Program Integrator specialist (Technical Working Group Coordinator) to coordinate TWG work. This individual could do reporting, keep track of progress of TWG, attending meetings, etc.

The following resources currently available were confirmed:

- Emong Morales, ADB-SEER, reported that there would be two positions to support the IRS. The first position has been recruited (Coastal and Marine Resources Management Policy Specialist) and the second position (KM Specialist) will be recruited with clearance of the IRS Executive Chair to whom the individual will be reporting to directly.

## MOBILIZING SUPPORT

Peter suggested that it is a challenge to coordinate mobilizing support through multiple Partners. With the CMWG Peter noted how the Chair had requested support to the Partners through a written request for inputs to the November pre-SOM meetings, and partners mobilized quickly. He suggested if a communication came from the Secretariat or the CMWG requesting staffing support from Partners including information on an SOW, timeframe, etc., partners have a mechanism to mobilize support.

Dr. Suseno relayed his appreciation for this suggestion and informed that the IRS is trying to develop a similar approach.

The following was confirmed as a decision by the Secretariat:

- ☑ **Decision:** Dr. Suseno expressed his appreciation of discussions and outcomes achieved at this point in the meeting. On behalf of the IRS, he requested that the *Table: CTI-CFF Partner Project Overview* (Appendix 3.) be used as a standard template and framework for mapping Partner support in the future. This is the first time such a tool has been developed and it is very useful. The template is very much in line with the ADB RETA project that is undertaking project/program mapping for its decision support system.

## 4. THEMATIC TECHNICAL WORKING GROUPS

**4. Thematic Technical Working Groups  
TWGs for Seascapes, EAFM, MPA-Threatened Species, CCA, Capacity Development-Cross Cutting**

<b>Summary of Current Support</b>	<ul style="list-style-type: none"> <li>▪ Technical Assistance, Coordination and Staffing support – US regional activity teams, regional coordinator, support teams</li> <li>▪ Technical Assistance for TWGs including planning, facilitation, document, etc.</li> <li>▪ TWG Meeting funding, operations, logistics, travel, facilitation support</li> <li>▪ Technical Assistance for coordination with the Secretariat and developing the Roadmap Agenda</li> </ul> <p>Significant funding, technical, coordination and operations support for regional meetings to advance RPOA goals and priorities. The US and partners have been critical to the development and operations of the Thematic TWGs. None of the Thematic TWGs are anticipated to be fully sustainable without partner support after 2013. The US has funded most regional engagement to advance EAFM, MPA and CCA RPOA goals.</p>
<b>Questions for Future Support</b>	<ol style="list-style-type: none"> <li>1. To what extent will Australia continue to supporting Seascapes TWG after 2013? To what extent will TNC continue supporting the MPA-Threatened Species TWG after 2013?</li> <li>2. What level of activity and partner support can we expect for EAFM, CCA and MPA. Seascape TWGs after 2013?</li> <li>3. What continued support to the TWGs will be needed after 2013? How will EAFM, MPA and CCA goals in particular continue to be advanced?</li> </ol>

Question: From the Secretariat’s perspective, does this need continued support and what type of support:

- Charlie highlighted that a primary mechanism has been work through the regional exchanges. Each WG will have to figure out how to best operate. Meeting participation and travel supported by the US will not be available after sept 2013.
- Peter highlighted for CD TWG Chairs were never confirmed and there has never been a meeting for this TWG. Marilou suggested there is not a need for a CDWG as there is the KM mechanism.
- ✓ Next step: Eko suggested that although every TWG has a Chair progress has been advanced with Partner support. He requested that an outcome of the session be the identification of a lead Partner for each TWG.

The following was confirmed as a decision by the IRS and Partners:

- ☑ Decision: **Seascapes - Australia** will lead but looking to partner with CI at the regional level.
- ☑ Decision: **EAFM - WWF** will lead and CI can also support.
- ☑ Decision: **MPA/Threatened Species - TNC** will continue lead.
- ☑ Decision: **CCA - WWF** will lead.
- ☑ Decision: **Cross-cutting - Capacity Development: To be determined** – not operational but Eko reported that there is a potential new partner who can fulfill this role. Niquole informed that CI would like to be involved.

General Discussion:

**NCC Regional Coordinators:** There is a need for NCC regional coordinators in each country. Peter highlighted that an ongoing need has been the preparation of countries before SOMs, WGs, regional exchanges and other meetings. These events go well when participants are sufficiently prepared but a significant gap the PI has identified and tried to overcome is to systematically support the process for in country preparation for regional meetings and event, and to ensure the right people are sent. Limited engagement with NCCs and the limited operations of TWGs mean those senior government officials are often given very little time to prepare. The counties need NCC regional coordinators who should be full time persons supporting NCC focal points and agencies, and who are at the same time plugged in directly with regional Secretariat and have the same scope of work as the coordinators in other countries. Multiple partners have approached this but the support has not been connected to CTI’s regional coordinating structures which center on the IRS. This would also assist in streamlining and supporting the mandate of the TWGs, because the capacity and time Chairs and TWG members have is limited. Although staffing support has been

provided by partners to various NCCS, what is missing is the system to connect those. It may be coordination and management issue, rather than a resource issue.

Discussion about the idea of NCC regional coordinators followed. Lida liked the idea of an NCC coordinator. Simon reported that there were coordinators in place in PNG, the Solomons and Timor-Leste. Emong stated that the NCCs have requested staffing and meeting support from ADB which it is trying to address. Maurice responded to Simon's comment saying that the liaisons in the countries that have been provided by various projects including CTSP and the PI in Malaysia and Solomon Islands have worked very well and there have been strong benefits.

- **Need:** Eko commented that it is critical to get the six countries to internalize the regional level of CTI-CFF work through not just agreement but adoption and application in-country. It is important to get the six countries to work together on joint problems- this is not just the sum of six country activity. So this process must be supported through NCCs.
- **Need:** Travis reemphasized the need to show countries the value added of regional engagement so that there was more of a bottom up demand driven process. He asked whether NCC coordinators were as important as ensuring the regional agenda complemented national efforts rather than vice versa.
- **Need:** Maurice stated that having worked in countries that the NCCs need regional coordinators. The national level work will get done anyway because they are default; the problem is getting countries to think regionally. The CTI-CFF exists to drive that regional thinking in countries and a regional coordinator will enable that two way street.
- **Need:** Travis agreed to and recognized the NCC need but emphasized that it was not clear that the countries saw the value of the CTI-CFF outside of a way of getting donor support and asked if more could be done to articulate the value of CT in a much more practical sense e.g. what are the connectivity issues, economic, ecological, cultural, etc.

Partners were asked to confirm what support was being planned for NCCS and reflected the following:

- Indonesia: ADB budgeted provision of KM and staff support (including budget for meetings and publications)
- Malaysia: WWF will continue to provide support. ADB has approved provision of staff support
- PNG: WWF and TNC will continue to provide support at the same levels to date.
- Philippines: WWF and ADB will continue support. CI will continue support sitting on the NCC.
- Solomon Islands: Australia will not be supporting after March 2012. WWF support for the NCC position will not be funded. There is a need to consider continued support for NCC position
- Timor-Leste: ADB plan to hire an NCC Coordinator Officer for six months. CI is providing technical assistance to support SOM and other meeting preparation which will continue.

**Leveraging the CTI-CFF:** Lida responded to Eko's commenting on the clear benefits of being part of a regional effort such as APEC and CBD including strengthened negotiating position. Some of the smaller CTI-CFF countries are stating this explicitly as a benefit they are getting at large international issues. CTI-CFF could focus on issues such as tuna, trade, climate change and trans-boundary enforcement.

**Tuna:** Dr. Suseno emphasized that one of the impacts of the CTI-CFF as a regional organization is the stronger voice it has that individual countries. The CTI is recognized as a tuna producing area. Three of the top major tuna countries are in the CTI including the Philippines, PNG and Indonesia.

- **Need:** Dr. Suseno expressed that there is a need to promote regional cooperation for Tuna in the CTI. Dr. Suseno also was enthusiastic about encouraging countries to learn together and work together with the Pacific countries. It is good if the initiative can strengthen the voice and recognition of the small island developing states. Tuna is a cross boarder and



migratory species. When we learn of diminishing tuna it is very painful for the CTI. Dr. Suseno suggested it was time to look at regional cooperation for a focused way like for tuna which could be an output of the Partner Meeting. Tuna is important. It is cross border issue.

Travis stated that he was nervous at the idea that the CTI should act a negotiating block in the international forum. Australia sees the CTI-CFF as a way to work together and to build capacity but does not see the initiative as having this mandates which is not reflected in the RPOA.

Dr. Suseno responded that the aim was not to for the CTI to serve as a negotiating block but rather a mechanism to appreciate and serve commonalities. For example, Dr. Suseno attends RFMO meetings and sees other colleagues from the world, who asks, "So what is your position on tuna?" and I have no response for the CTI-CFF. Different countries have positions but I have nothing to say for the CTI-CFF. We need to be able to assess what is going on in the region and have a way to talk about it. It is not wrong to talk about Tuna, we do not need to make a block, but we do need to facilitate understanding. I need to have an answer to, "What is the status of the Coral Reefs? Also, we need to encourage discussion about LRFFT. And also about Tuna.

**Seascapes:** There was a general discussion about supporting Seascapes TWG and connecting that with support that might be ongoing with actual seascapes like the SSME or BSSE. WWF supports SSME and BSSE for example. Walter Salzer, GIZ representative, suggested that SSME meetings were currently being scheduled to coincide with CTI meetings. Lida expressed that while this was not working optimally yet, this could be a good approach with efficiencies.

- ☑ **Decision:** Travis stated that engagement with SSME and BSSE could be included in the Agenda into the upcoming Seascapes TWG meeting planned in February as it is a rich area for discussion.
- ✓ **Next step:** Eko suggested that the Seascape TWG should address seascapes as a general topic that might include encouraging countries to develop their national Seascapes plans. As has been agreed in SOM, CTI appointed SSME as priority seascape. Perhaps at the next some BSSE can be proposed a priority seascape as well.

**NOAA Engagement:** Dr. Suseno invited NOAA to share their experience on scientific and technical support in the region.

Janna reviewed NOAA's engagement in the region and expertise. NOAA as a scientific and technical agency will continue to have relationships with peer agencies in the region after the US CTI Support Program. From the technical perspective, there is a lot of work to be done with respect to EAFM, MPA and CCA tools and curricula development which is best implemented across scale at the local, sub-national, and regional levels. NOAA is not in a position to commit to work in future as it would need to do so under the leadership of USAID. NOAA has some relationships with peer institutions and ministries in countries so that is a potential area for engagement.

Juniper informed that USAID was in the process of developing and signing new Interagency Agreements with NOAA which should be finalized by June.

## Day 2: 17 January 2013

### RPOA IMPLEMENTATION AND REGIONAL PRIORITIES

Dr. Darmawan, IRS Regional Coordinator provided a PowerPoint presentation (Annex CCC) reviewing the RPOA priority goals and nine priority action including progress and achievements to date. Some highlighted needs hoped to be addressed in the session included:

- Clarifying next steps for some technical areas and priorities;

- Clarifying priority actions from the 2013 TWG work plans;
- Proposing the inclusion of LRFFT as a priority action at the next RWPS in light of the number of related activities planned for 2013.

Eko summarized Darmawan's presentations and key points: from 37 RPOA activities, the CTI agreed to prioritize nine actions. From nine actions there were only eight actions addressed. What has been achieved or not needs to be further clarified. These activities and outcomes have been focused at regional. For the remaining RPOA targets, it would be important to clarify what are all the national/country level achievements are that support the targets. The most advanced achievement from the RPOA is MPA. There is a lot of activity supported by Partners in every country. The least level of regional level activity has been towards threatened species which is a very important issue but no one is supporting that activity. That is the general summary of RPOA achievement.

Discussion:

**SSME & BSSE Seascapes:** Lida followed up highlighting why it was important to look at the SSME and BSSE as there has been a significant amount of work done for turtles in BSSE for example. There is much national working being done towards specific goals and targets including at the seascape level. Lida stated that as WWF looks for and works with champions, if seascapes could be seen as leaders on certain issues (e.g. threatened species), such work could be supported by this route.

Emong pointed out that as many of the participants in SSME and CTI are the same, improving coordination should not be too challenging. He also reflected that there are many organizations doing/planning to do work on threatened species including IUU work (WWF, CI, GIZ, NOAA, etc.)

Some needs and suggested actions were put forward as follows:

- Need: Eko suggested that for SSME and BSSE some communication and coordination challenges persisted. He suggested that the Seascapes TWG develop a mechanism for communicating and capturing reporting from these seascapes.
- Need: Travis highlighted the need for mapping national achievements with RPOA goals. Analysis before the RWPS would be helpful showing national level work can advance regional priorities.

**Pushing a Regional Agenda:** The challenges of getting countries to focus at the regional level were discussed including facilitating the right conditions and getting the right engagement to make it happen.

- Need: Eko suggested that the CTI needs Partner(s) to continue to remind governments of regional focus and advantages of regional engagement.
- Need: Janna highlighted the need to continue working at cross scale – regional, national, and local- as a mechanism to show benefits and encourage regional approaches. She reflected that working cross-thematically was critical as well.

## SESSION: NEEDS ANALYSIS

William Jatulan, PI Senior Regional Coordinator, provided a Power Point presentation on the needs analysis for the thematic goals which included a review of the M&E Framework.

Alan provided further clarification on the M&E system and how will connect. Over last three years, the M&E group has tried to develop indicators to track progress across the five goals. There are already questions that are meant to capture national progress. If the system begins to work as planned, it will provide a much better idea of how moving forward on the RPOA. **The implementation of the M&E system would be a solution to many of the tracking and reporting needs.**

- **Need:** Peter highlighted the chance for everyone to review the materials presentation and documents distributed and to send any necessary edits/additions in track-changes later.

### GOAL I SEASCAPES

CTI-CFF Area of Support	Goal I: Priority Seascapes Designated and Effectively Managed
<b>Summary of Current Support</b>	<input type="checkbox"/> Technical Assistance to meet RPOA actions <input type="checkbox"/> TWG establishment support <input type="checkbox"/> TWG and other meeting support (planning, conduct) <input type="checkbox"/> Spatial Database development <input type="checkbox"/> Palm oil industry development (Sabah) <input type="checkbox"/> Development of studies, assessments, research including financing <input type="checkbox"/> SSME assistance <input type="checkbox"/> BSSE assistance <input type="checkbox"/> (WWF, ADB, Australia)
<b>Questions for Future Support</b>	1. How are activities at the national/sub-national level being connected to the RPOA and TWG? 2. How can RPOA priorities be advanced in light of the limited TWG capacity ? 3. What are the priority needs to bring forward to the Regional Priorities Work Shop?

#### Discussion:

- Charlie reminded that there are TWG virtual workspaces as part of the CTI-CFF Secretariat Website as well as library on the site where documents can be uploaded and shared.
- Janna highlighted that NOAA is interested in multi-objective planning from an institutional perspective so will be looking at the outcomes of the RPWS to determine next steps as well as scoping with USAID and Secretariat to consider engagement.
- Lida asked how existing seascapes work that WWF and others are doing that are not captured by the RPOA or in the EZ should be addressed.
- **Need:** Travis suggested that this and other questions should be raised at the Seascapes TWG meeting and the next RPWS.

The following resources currently available were confirmed:

Niquole highlighted CI support to the Philippines was provided under the framework of supporting SSME goals. They are somewhat struggling to bring the support to a regional forum level. CI has developed a Guidebook on Seascapes that is for the CTI to adapt and will be working with the TWG. For Indonesia, CI is supporting SSME, BSSE and Birdshhead along with other donors which feed into the NPOA.

CTI-CFF Area of Support	Goal 2: Ecosystem Approach to Management of Fisheries (EAFM) and Other Marine Resources Fully Applied	
<b>Summary of Current Support</b>	<ul style="list-style-type: none"> <li>•Technical Assistance to meet RPOA actions</li> <li>-EAFM CTI Regional Framework development</li> <li>-LRFFT Forum development</li> <li>-Capacity building for fisheries management and enforcement</li> <li>•TWG establishment support</li> <li>•TWG and other meeting support (planning, conduct)</li> <li>•Regional Exchange Support</li> <li>•Curricula development</li> <li>•Training (EAFM, EBM, IUU)</li> <li>•Toolkit development (integration toolkit)</li> <li>•Trans-boundary exercises for IUU</li> <li>•Establishment of Coral Triangle Fishers Forum</li> </ul>	<ul style="list-style-type: none"> <li>•Studies, analyses, reports including (Monitoring, Control and Surveillance: Economic Valuation, etc.)</li> <li>•Application of EAFM to Tuna and LRFFT sector across CTI</li> <li>•National level support to apply EAFM</li> <li>-Government-to-Government and peer-to-peer scientific support</li> <li>-Legal analysis for EAFM and IUU</li> <li>-National EAFM Operations Guides development</li> <li>-Policy analysis and development</li> <li>-Curricula development</li> <li>-Training/ General Capacity Building</li> <li>•(US, WWF, ADB, Australia, TNC)</li> </ul>
<b>Questions for Future Support</b>	<ol style="list-style-type: none"> <li>1.How are activities at the national/sub-national level being connected to the RPOA and TWG?</li> <li>2.How can RPOA priorities be advanced in light of the limited TWG capacity ?</li> <li>3.What are the priority needs to bring forward to the Regional Priorities Work Shop?</li> </ol>	

Discussion:

- **Need:** In response to the question of the TWG mandate to connect between regional and national, Maurice confirmed that this was the case but it was not being effectively done. Having an anchor imbedded inside a Ministry not buffeted about by political winds makes a difference Partners need to step up and provide anchors within those ministries. In The Solomon Islands there is such an imbed of the Ministry of Fisheries which as been very successful. This individual could be the NCC regional coordinator or not, depending on the skills and what the objective is.
- Lida strongly supported that this approach which is what the CTSP is doing in the Indonesia program for EAFM. It has been critical and had significant impact.
- **Need:** Janna and Travis highlighted the need to link to other regional agreements and bodies (e.g. SEAFDEC, IUU, IUCN, etc.) and identify points of engagement.
- **Need:** Maurice also highlighted the need for an information system in the CT that allows scaling which is currently not captured by but could be linked to the M&E system. The implications of seascapes, EAFM and other efforts vary at different scales.

## GOAL 3: MPA

CTI-CFF Area of Support	8. Goal 3: Marine Protected Areas (MPAs) Established and Effectively Managed	
<b>Summary of Current Support</b>	<ul style="list-style-type: none"> <li>• Technical Assistance to meet RPOA actions</li> <li>- CT MPA System development</li> <li>- CT Management Effectiveness Protocol development</li> <li>- Capacity Building</li> <li>• CT Atlas establishment and management</li> <li>• TWG establishment support</li> <li>• TWG and other meeting support (planning, conduct)</li> <li>• Training (Management Effectiveness, CTAtlas, etc.)</li> <li>• Toolkit development (integration toolkit)</li> <li>• Regional level studies, analyses, assessments (e.g. Reefs at Risk)</li> <li>• Regional Exchange Support</li> </ul>	<ul style="list-style-type: none"> <li>• National level support including:               <ul style="list-style-type: none"> <li>- Government-to-Government and peer-to-peer scientific support</li> <li>- Policy development</li> <li>- Training (Management Effectiveness, GIS, Monitoring, etc.)</li> <li>- Studies, analyses, assessments</li> <li>- Mapping support</li> <li>- Ecotourism development</li> <li>- Curricula development (MPA 101)</li> <li>- LLMA Network development and support</li> <li>- Integration site development</li> </ul> </li> <li>• (US, ADB, Australia, TNC, WWF)</li> </ul>
<b>Questions for Future Support</b>	<ol style="list-style-type: none"> <li>1. Will CT6 have enough resources to implement the CTMPAS as planned beyond 2013?</li> <li>2. The CT Atlas is an integral component of the CTMPAS and M&amp;E System? What are the needs for CT Atlas management/funding beyond 2013?</li> <li>3. How are activities at the national/sub-national level being connected to the RPOA and TWG?</li> <li>4. How can RPOA priorities be advanced in light of the limited TWG capacity?</li> <li>5. What are the priority needs to bring forward to the Regional Priorities Work Shop?</li> </ol>	

Question: are there enough resources for CTMPAS beyond 2013?

- Alan responded that the CTMPAS builds on national efforts which guide the system. There is not so much need to manage at the regional scale, and needs can probably be covered with existing resources.
- Lida asked for confirmation from Alan if he was sure, as WWF did a costing for the CTMPAS for the SSME seascape, but the funding and the mechanisms to implement isn't there yet. WWF Indonesia is looking at its five year strategic management plan for which they wish to contribute 100% to targets of the Indonesia NPOA; however, there is a question of numbers as the percentage of hectares of critical ecosystems committed and availability of territory don't add up.
- Alan confirmed that targets are beyond what is currently possible to address but the CTMPAS is trying to move governments towards those targets. As a result, sustainable finance probably needs to be addressed to make it happen, but it is not specifically addressed. Alan also confirmed that 10% of habitats are to be protected, not 10% of the ocean.
  - Need: Sustainable finance needs to be added to address resource needs to implement the in CTMPAs.
  - Need: Lida highlighted the need to discuss critical issues in addition to the topics the Partner meeting was trying to address which are related to institutions, partners and the processes to provide support. There is often insufficient time and space to discuss such issues.
- It was suggested that in the RPWS, time be allocated before the meeting for Partners to discuss issues and provide inputs that might feed into TWG/RPWS meetings.
- Janna informed NOAA is very interested in continuing engagement in EAFM, MPA and CCA and felt they address some threatened and endangered species work through technical assistance and other ways including possible participation in the RWPS.

## GOAL 4: CLIMATE CHANGE ADAPATATION

CTI-CFF Area of Support	9. Goal 4: Climate Change Adaptation Measures Achieved	
<b>Summary of Current Support</b>	<ul style="list-style-type: none"> <li>•Technical Assistance to meet RPOA actions</li> <li>-CCA Regional Early Action Plan (REAP) development</li> <li>-REAP Implementation including CCA Local Early Action Plan development, printing</li> <li>-Capacity building</li> <li>•Regional Exchange Support</li> <li>•Regional Trainings</li> <li>•TWG establishment support</li> <li>•TWG and other meeting support (planning, conduct)</li> <li>•Toolkit development (integration toolkit, LEAP toolkit)</li> <li>•Climate Change Market Place Establishment</li> </ul>	<ul style="list-style-type: none"> <li>•Regional level studies, analyses, assessments, reports (Blue Carbon Report, Climate Scenarios report, etc.)</li> <li>•Deployment scientific equipment/development scientific products</li> <li>•National level support including:               <ul style="list-style-type: none"> <li>-Government-to-Government and peer-to-peer scientific support</li> <li>-Policy development support</li> <li>-Conduct of Vulnerability Assessments</li> <li>-Planning and Adaptation Strategy development</li> <li>-Trainings and awareness raising</li> <li>-Studies, analyses, assessments, reports</li> <li>-Integration sites</li> </ul> </li> <li>•(US, ADB, Australia, TNC, WWF)</li> </ul>
<b>Questions for Future Support</b>	<ol style="list-style-type: none"> <li>1. Will the CT6 have enough resources to implement the REAP beyond 2013?</li> <li>2. How can RPOA priorities be advanced in light of the limited TWG capacity ?</li> <li>3. What are the priority needs to bring forward to the Regional Priorities Work Shop?</li> </ol>	

### Discussion:

- Niquole confirmed that one of the effects of the Regional Exchanges (REX-es) has been a greater willingness for countries to learn from each other and incorporate activities and methodologies of fellow CT countries into their own work. For example, the Solomon Islands, Timor-Leste and PNG are become increasingly more willing to consider each other activities and talk to each other over the course of the US CTI Program.
- Walter relayed that while the Philippines were advanced in CCA at the theoretical level, application was still a long way behind. This is why the SSME platform is so interesting as a means to promote cross learning.
- Cathy informed the CTSP consortium was working with IUCN in PNG and will work with the Solomon Islands on a USAID CCA project. There are affinities between the Solomon Islands and PNG, and opportunities.
  - Need: Lea suggested it was a good time to invite UNDP into discussions as they have been supporting CCA extensively.
  - Need: Eko suggested that a mechanism be developed to presenting CCA and REAP related achievements and experiences.

The following resources currently available were confirmed:

- Emong informed that under the ADB CTI-SEA project there is site in Palawan where the US CTI helped with the completion of CCA planning which ADB is now helping to implement.
- Lida informed WWF would like to support Philippines in its leadership role in CCA efforts.

## GOAL 5: THREATENED SPECIES

CTI-CFF Area of Support	10. Goal 5: Threatened Species Status Improving
<b>Summary of Current Support</b>	<input type="checkbox"/> CT Shark activities in development (WWF) <input type="checkbox"/> Marine turtle conservation <input type="checkbox"/> National level support including: -National level marine turtle conservation -National Turtle Strategy planning support (SI) <input type="checkbox"/> (WWF, TNC)
<b>Questions for Future Support</b>	1.How are activities at the national/sub-national level being connected to the RPOA and TWG? 2.How can RPOA priorities be advanced in light of the limited TWG capacity ? 3.What are the priority needs to bring forward to the Regional Priorities Work Shop?

### Discussion:

- There was a general discussion on the lack of advances made for TWG efforts and the fact that the WG was currently combined with the MPA TWG.
- Marilou suggested that the MPA and Threatened Species WGs continue to be combined as it seemed to be working efficiently.
- Need: Travis highlighted there are a number of MOUs for threatened species, so using those exiting agreements and platforms and connecting them would be a critical step to invigorating those efforts.

The following resources currently available were confirmed:

- Lida suggested that WWF as a Partner could take the lead in supporting TWG efforts but agreed with Marilou's efficiency point.

## NEW PARTNER AND OPPORTUNITIES FOR ENGAGEMENT

Hendra Siry provided PowerPoint presentation of the criteria developed at SOM8 for new partners.

Definition: "Partners" remain a select group of strategic supporters as outlined by the CTI Rules and Regulations. Other supporters are involved as a part of a "CTI Stakeholder Group" who share information on their activities, receive information on CTI plans and activities, invited to meetings on a case-by-case basis (not automatically).

### CTI-CFF Partner Criteria

- Demonstrates commitment, and capability and integrity to be a major supporter over a sustained period of time for the implementation of CTI RPOA and NPOAs.
- A commitment to work with the Regional Secretariat, NCCs and other Partners in planning and providing support towards achieving the shared vision of the CTI-CFF.
- A commitment to work with the CT6 and other Partners to help to successfully develop the CTI-CFF as a regional forum, and to help plan, coordinate and mobilize efforts to achieve successful implementation of the CTI-CFF RPOA and NPOAs.

The process for becoming a CTI Partner includes application to the Secretariat, which then facilitates the CTI Council of Senior Officials and Council of Ministers' consideration of the application. The IRS has not received applications for new partners to date. There is a separate process for governments to become a party to the CTI-CFF through Rule 21.

### Discussion:

- Need: Marilou recommendation that new applications be posted on the Secretariat website to promote transparency.
  - Hendra informed that the Government of Brunei, the Government of Japan and GIZ were sent an invitation for the Partner meeting. There is no formal application form but an expression of interest should be forwarded to Chairman. The IRS currently has no recruitment strategy for new partners but would like to discuss this.
  - Need: Travis provided some clarification on Partner criteria. While they were being developed, several countries were quite firm that partners should be a select group of major players but there is also a need of better engaging the full range of organizations supporting the CTI but not at that level. This second group would be the CTI stakeholder group. Travis highlighted the need to be cautious in terms of managing expectations of prospective new partners in light of the CT6 sensitivities mentioned.
  - Lida mentioned that over the years information has been forwarded about the interest of various parties including the Italian Government, IUCN, the World Bank, etc. and asked how does that get supported in a way that is meaningful for the IRS?
  - Need: The Secretariat articulated that it needed support from current Partners to facilitate outreach to wider partner and stakeholder group.
- ✓ Next step: Peter suggested the application system be tested on a real prospective partner soon such as UNDP which approaches Peter on an annual basis.
  - ✓ Next step: Rene suggested extending an invitation to FAO for the RPWS.

Next step: Travis suggested on of the support positions the IRS has requested could be tasked to develop strategic planning for new partners' engagement.

## INTRODUCTION OF PROSPECTIVE NEW PARTNERS

**Coral Triangle Center:** Hesti Widodo, Coral Triangle Center -Training and Learning Manager, thanked the Partners and the IRS for the invitation to the meeting. She provided background on CTC relaying that CTC activities were in line with a number of the CTI goals and objectives. CTC supports CTI countries and regional learning network. At SOM8/MM4, CTC expressed its intention to strengthen its relationship with CTI. CTC has worked on a number of CTI initiatives including the CTI Regional Business Forum and learning network development.

**Volunteer Services Overseas:** Russ Cullinane provided background on VSO which is an international organization that sends volunteers around the world and supports national volunteering in countries where they work. The average age of a VSO volunteer is 43 years old and has the experience to build capacity. Russ's observation from the two day meeting is that there appear to be capacity building needs. VSO is not interested in driving the CTI agenda in a partnership role but would be interested in supporting in capacity building from the local, national and regional level to move forward the CTI agenda. The VSO regional management team has put coral triangle support as priority for VSO. VSO would love to be invited to partner forums even if it is not a Partner. VSO is actively fund raising so it can support countries in the Coral Triangle.

**GIZ:** Dr. Walter Salzer, Director and Principal Adviser, BMU-GIZ, highlighted that GIZ is not a donor but works at the commission of mostly German ministries in addition to other organizations including the World Bank. GIZ supports SSME countries. GIZ is also supporting the Solomon Islands and Timor-Leste. The German Government is currently in internal discussions about potential partnership with the CTI. As GIZ is addressing many of topics that overlap with CTI such as SSME it is very logical and useful that it be engaged with the TWGs. Walter reflected that with the needs expressed at the Meeting and the German Ministries would be interested in M&E Germany is putting a lot of money into biodiversity and there is big interest for reporting systems and good information on which policy decisions can be based. GIZ is project based with most activities lasting three to five years.



## SESSION: NEEDS ANALYSIS CONTINUED

### CROSS-CUTTING THEMES

CTI-CFF Area of Support	1.1. Cross-Cutting Themes / Other	
<b>Summary of Current Support</b>	<ul style="list-style-type: none"> <li>• Technical Assistance to meet RPOA actions</li> <li>- Local Governance Network development</li> <li>- Regional Business Forums conducted</li> <li>- Regional Business Council development</li> <li>- MPA Learning Network development</li> <li>• Regional Exchange Support</li> <li>• Coral Triangle Day support</li> <li>• Capacity Development</li> <li>• Toolkit development (integration toolkit, CTI Executive course)</li> <li>• EBM related activities</li> </ul>	<ul style="list-style-type: none"> <li>• National level support includes:</li> <li>- Staffing support (SI)</li> <li>- Sustainable Financing programming</li> <li>- Government-to-government, Peer-to-peer scientific support</li> <li>- General Capacity Develop support (monitoring, mentoring, learning network development, etc.)</li> <li>- Curricula development</li> <li>- Training</li> <li>• (US, ADB, Australia, TNC)</li> </ul>
<b>Questions for Future Support</b>	<ol style="list-style-type: none"> <li>1. How are activities at the national/sub-national level being connected to the RPOA and TWG?</li> <li>2. How can RPOA priorities be advanced in light of the limited TWG capacity ?</li> <li>3. What are the priority needs to bring forward to the Regional Priorities Work Shop?</li> </ol>	

Discussion:

**Regional Exchanges: The Regional Exchanges (REXes)** are a primary mechanism for advancing RPOA goals. The question was how that would be addressed after the departure of the US CTI:

- For Seascapes, Travis informed that REXes will be part of Australia support.
- For EAMF, Lida informed that WWF has tried to facilitate LFFT platform which has included engagement with SEAFDEC and other prospective partners which WWF would like to continue to support. But this does not mean entire EAFM TWG would be served by that.
- William informed that for the Local Governance Network, the Philippines League of Municipalities (LMP), has agreed to serve as secretariat but there will still need to be significant support at the regional level beyond 2013.

**Coral Triangle Day:** At SOM8/MM4, June 9 was officially declared CT Day.

- Lida informed WWF will continue support CT Day communications. Plans and ideas for 2013 will soon be shared with development Partners. For 2013, WWF is keen to support the Philippines to make it big there and will also continue supporting linkages to the website. Next year the focus will be on Malaysia. The emphasis will be to support that initiative be taken by the people of the Coral triangle.

**Integration toolkit:** Maurice informed the US CTI Integration Toolkit is almost completed and will be ready for publication and roll out soon. Other toolkits have been piloted, revised, and rolled out including the LEAP, MPA Guide, MPA Management Effectiveness Protocol, etc. Final drafts of all documents should be available by late March or April.

- Need: Travis asked that an integration toolkit presentation be prepared for the Seascapes TWG meeting in February as it seems very useful and relevant.

**Regional Business Forum:** Lida informed that the US CTI has always supported participation of governments to business forum with the next one being planned in March 2013 in Bali. The CTI is looking to launch the business development advisory council at the forum. It could work like ABAC which is part of APEC. Lida will reach out to Partners about further engagement.

## SESSION: SUPPORT TO COORDINATING IMPLEMENTATION FOR THE REGIONAL PRIORITIES WORKSHOP (RPWS)

Darmawan presented a PowerPoint reviewing the development and adoption of the RPOA, the implementation of the NPOAs and the identification of priorities at the 2010 Regional Priorities Workshop.

The aim with the 2013 RPWS is to revisit what has been accomplished and see what progress the CTI wants to make in the next three years. The aim is to also see if there are any changes in national priorities.

Darmawan reviewed the draft TOR for the RPWS developed by the IRS. (Annex DDD and E) Emphasis will continue to focus on purpose of CTI and actions needed from a regional level. Both Countries and Partners are expected to provide data to prepare for the RPWS.

Darmawan highlighted the need for a steering committee to help prepare for the RPWS, to collect data, analyze it, etc.

#### Discussion:

- There was discussion on the format of the RPWS and how it could be conducted. Alan highlighted because different TWGs are at different stages of development whether the goals of the RPWS could be built into 2013 Roadmap REXes to reduce the need for one more meeting. The advantages of having a separate RPWG meeting were offered including supporting the integration of thematic areas. Travis reflected that a number of the agenda topics were going to be addressed at the upcoming Seascapes TWG meeting in February, so the RPWS agenda should be reviewed with that in mind.
- The timing of the meeting was considered unrealistic in light of preparations needed. February was considered too soon for the meeting and other options were explored. Maurice highlighted that there were a number of CTSP closeout events planned for June.
- Niquole informed that Timor-Leste was scheduled to do an NPOA review the third week of April.
- Recommendation: Travis suggested the RPWS could benefit from presentation up front about key regional scale issues e.g. reefs at risks etc. or bring in regional experts to show the value of working regionally.
- Darmawan informed that RPWS is anticipated to have 30 TWG participants in addition to Partners and experts so the total would include 40 to 50 people.
- ADB informed on their mapping tool which for which a prototype is being developed which will be piloted in the Philippines.. It will unlikely be ready for use at the RPWS.

#### Decisions:

- There was agreement on the value of the RPWS and for the TWGs to meet in one place, so planning for the meeting would continue. A date should be determined by the Secretariat in consultation with the CT6 and Partners, as soon as possible. Countries will be engaged within the next week about planning of the workshop to confirm what would be helpful.
- The Secretariat would develop a steering committee including TWG leads. The following Partner focal points for to participate in the RPWS were agreed to:
  - CI: Niquole – Timor-Leste
  - ADB: Emong Morales (Marilou, can you include Lea as my co-focal point?)
  - Australia: Travis Bover
  - TNC: Laura Whitford
  - WWF: Lida Pet Soede
  - US: Rene Acosta

## **SESSION: PARTNER COORDINATION**

Hendra Siry provided a PowerPoint presentation on partner coordination.

## Discussion:

As a conclusion to the presentation, the IRS presented some additional priorities not mentioned previously in the meeting that the IRS believes are priorities for partner support:

- Writing new proposals for CTI-CFF activities
- M&E implementation
- Mapping of CTI-CFF related activities
- Connecting with new donors/partners
- Connecting with several “species” organizations (as related to thematic activities)

Eko confirmed that implementation of the M&E System was a very important step so that monitoring and reporting on the RPOA can be initiated. He stated that proposal writing support could be for projects or for governments. Project support could be new NGO projects or adding elements to ongoing projects.

Marilou proposed setting up a CTI proposal facility through the financial architecture process. The proposals can be linked to master plans for sustainable financing for the regional goals. A regional technical facility has been set up in the Pacific and the architecture is under design. ADB has a list of technical consultants and potential experts to help prepare calls for proposals. The IRS should consider this mechanisms support

Eko suggested that it could learn from the example of CI and its efforts to set up a conservation trust fund.

Travis stated that generating ongoing funding seems to be on the agenda of the FRWG and the Business Development unit proposed would be responsible for this.

There was discussion about the timing to establish the permanent Secretariat and the ability to draw on funds through the country contribution mechanism. Eko highlighted bridge funding will continue to be needed until then and even after, the funds will likely cover only Secretariat operations and not all technical needs for example ability to attend all international meetings.

- Need: Travis and other highlighted the need for the permanent Secretariat to continue attracting other funds and investments such as the SPREP model.

Lida informed that CTSP is been working on an on-line CCA Market Place. WWF will host and pay for the capacity to run it. It is a match maker and fund raising mechanisms. Lida expressed the hope that countries will see its benefits and the Secretariat can facilitate that funding mechanism.

## TWG Coordination and Protocols:

- Need: There was discussion on how TWGs coordinated and the SOM resolution of the IRS's role. Coordination has been working on an informal basis based on precedence and good faith but protocols need to be written down.
- Need: There is a need for protocols for expanded stakeholder and partner engagement to be developed. It was confirmed that if a new prospective partner was interested in the CTI, they should contact Hendra who will facilitate further coordination within the IRS including the Chairman.

Final points, needs and next steps were put forward as follows:

- Need: Eko highlighted the challenges is explaining and presenting to people what the CTI is doing/has done and achieved in a clear way. Peter suggested a rigorous M&E system would significantly assist in this.
- Need: Travis expressed support for the mobilization of experts assigned to CT6 countries to support the agreement and ratification process.

- Need: It was requested that the RPWS/CTI explored the idea that Seascapes and Threatened Species should be joined.
- Darmawan confirmed the IRS will provide summaries of the Partner Meeting to TWG leads, countries, Partners, etc. so that outputs can be fed into the RPWS.
- Juniper reminded that the PI mechanism continues to be in place until September so the mechanism can be used to address priorities as useful.

## CLOSING REMARKS

Juniper thanked everyone on behalf of the US CTI for their robust participation in the meeting and expressed her hope that the meeting was as useful for the other Partners as it was for USAID. She stated that it was extremely helpful to work so closely with the Interim Regional Secretariat in preparing for and leading the meeting Juniper thanked partners for the extensive engagement to date particularly through conference calls and suggested the focus on technical and conceptual issues in the future will be important. She noted that this can be difficult at REXes and other high level meetings, but it is important to have those discussions at potential alternate venues. Juniper extended a special thanks to the IRS and its work with the PI including Peter and Nives to reach the meetings objectives. Juniper also thanked Charlie for excellent facilitation and support through the years.

Eko expressed that coordination between the Secretariat, Partners and CT countries has been tremendous and needs to be continued. This can be assisted by the development of guidelines, procedures and new partner engagement strategy which Australia has graciously offered support with.

Eko presented closing remarks for the Secretariat relaying a message from the Secretary General Sudirman Saad who sent his regrets:

*“I would like to thank you for your commitment to coming the meeting. I thank WWF, USAID and the PI for making this meeting possible and thank the Partners for their productive contribution for this meeting and to the CTI. Participation reflects our partnership.*

*I would like to highlight that with your remarkable support and cooperation, the IRS was able to fulfill most roles and functions as stated in its TOR. Together we have done a number of achievements. We highlight the need to support the ratification process, and strengthen the CTI structures. There are proposed positions and offers that are available for which we need work to fill. We appreciate your clarifying the assistance being provided through the needs analysis, review of support in 2013, and gap analysis.*

*We hope the Partner support for CTI will not stop here because we want this initiative to last forever. For this, we need to broaden partnership to mobilize new Partner support and cooperation at all levels. We also push to increase the CTI brand recognition. Again thank you to all of you and congratulations to all of us. Sudirmaan Saad.”*

# APPENDICES

## APPENDIX APPENDIX APPENDIX I: PARTICIPANTS LIST

### CTI-CFF Partners Coordination Meeting Sanur, Indonesia January 16-17, 2013

#### CTI-CFF INTERIM REGIONAL SECRETARIAT

**Darmawan**

Coordinator CTI-CFF Interim Regional Secretariat  
Ministry of Marine Affairs and Fisheries  
Mina Bahari III Building 7th Fl., Medan Merdeka Timur 16  
Jakarta Pusat DKI Jakarta 10110  
Indonesia Indonesia Indonesia  
Tel: +62 8111 874482  
Email: darmawan@indo.net.id

**Inkiriwang, Perri**

CTI-CFF Interim Regional Secretariat  
Ministry of Marine Affairs and Fisheries  
Jl. Medan Merdeka Timur No. 11 (eks Gedung Timur  
Lt. 19) Jakarta Pusat Indonesia  
Tel: +62 811 8881333  
Email: p\_inkiriwang@yahoo.com

**Rudianto, Eko**

Director, Marine, Coastal and Small Islands Spatial  
Planning Ministry of Marine Affairs and Fisheries  
Indonesia Coastal And Small Islands  
Ministry of Marine Affairs and Fisheries Mina Bahari III  
Building 7th Fl., Medan Merdeka Timur 16 Jakarta Pusat  
DKI Jakarta 10110 Indonesia  
Tel: +62 813 85660557  
Email: mrudiant@yahoo.com

**Siry, Hendra**

Vice Regional Coordinator CTI-CFF Interim Regional  
Secretariat  
Ministry of Marine Affairs and Fisheries Gedung  
Mina Bahari III, Bantai 9, Medan Merdeka Timur No. 16  
Jakarta 10110 Indonesia  
Tel: +62 812 9143536  
Email: hendrasiry@gmail.com

**Sukoyono, Suseno**

Executive Chair CTI-CFF Interim Regional Secretariat  
Ministry of Marine Affairs and Fisheries  
Mina Bahari III, Building 7th Fl., Medan Merdeka Timur  
16 Jakarta Pusat DKI Jakarta 10110 Indonesia  
Tel: +62 811 972197  
Email: suseno.sukoyono@gmail.com

**Yudiarso, Permana**

Assistant Coordinator, CTI-CFF Interim Regional  
Secretariat  
Coastal and Small Islands Affairs Ministry of Marine  
Affairs and Fisheries  
Perumahan Podok Surya Blok Q No.5 Kecamatan Karang  
Tengah Kota Tangerang, Banten 15157 Indonesia  
Tel: +62 812 9286254  
Email: permana.yudiarso@gmail.com

#### WORLD WILDLIFE FUND

**Pet-Soede, Lida**

Coral Triangle Program Leader  
World Wildlife Fund Indonesia  
Kantor Taman A9, Unit A-1, Jl. Mega Kuningan Lot  
8.9/A9, Kawasan Mega Kuningan Jakarta  
12950 Indonesia  
Tel: +62 21 576 1070  
Email: pet@wallacea.wwf.or.id

**Plume, Catherine**

Director CTSP World Wildlife Fund 1250 24th St., NW  
Washington,  
DC 20037 USA  
Tel: +12024685695  
Email: catherine.plume@wwfus.org

**Wawan, Ridwan**

World Wildlife Fund Indonesia  
Coasts and Small Islands  
Director General of Marine  
Jl. Medan Merdeka Timur No. 16 Jakarta Pusat  
DKI Jakarta 10110 Indonesia  
Tel: +62 8111 99586 +62 21 351 0357  
Email: wridwan@wwf.or.id

#### USAID Asia

**Acosta, Rene**

Regional Environmental Program Specialist (CTI)  
USAID Regional Development Mission for Asia  
63 Athenee Tower, 25th floor,  
Wireless Road, Lumpini, Bangkok, 10330 Thailand  
Tel: +66 2 2573285  
Email: racosta@usaid.gov

**Neill, Juniper**

Deputy Director Regional Environment Office  
USAID Regional Development Mission for Asia  
63 Athenee Tower, 25th floor,  
Wireless Road, Lumpini, Bangkok, 10330 Thailand  
Tel: +66-2-257-3241  
Email: jneill@usaid.gov

**O'Mealy, Mikell**

Environment Officer  
USAID Regional Development Mission for Asia  
63 Athenee Tower, 25th floor,  
Wireless Road, Lumpini, Bangkok, 10330 Thailand  
Tel: +66-2-257-3294  
Email: momealy@usaid.gov

#### USAID Indonesia

**Celly, Catharina**

USAID Indonesia

Management Specialist Coastal and Marine Program  
USAID Jl. Medan Merdeka Selatan  
No. 3-5 Jakarta 10110 Indonesia  
Email: ccatharina@usaid.gov

## **NOAA**

### **Barba, Kate**

Chief, National Policy and Evaluation Division  
Office of Ocean and Coastal Resource Management,  
NOAA 1305 East West Highway N/ORM5 Silver Spring,  
MD 20910  
Tel: 301.563.1182  
E-mail: Kate.Barba@noaa.gov

### **Shackeroff, Janna**

NOAA, International Coordinator Coral Reef  
Conservation Program NOAA 1305 East-West Highway,  
SSMC-4 Room 10330 Silver Spring MD 20910 USA  
Tel: 1+ (301) 713 3155 #170  
Email: janna.Shackeroff@noaa.gov

## **US Department of Interior**

### **Weitzel, Marc**

Senior Advisor, US Department of Interior  
Office of International Affairs  
International Technical Assistance Program  
Tel: 805/671-9746, 805/223-0385 (mobile)  
Email: marc\_weitzel@ios.doi.gov

## **US CTI SUPPORT PROGRAM INTEGRATOR**

### **Collier, Peter**

Chief of Party  
US CTI Support Program Integrator  
Chartered Square Building 29th Floor, Unit 2902  
52 North Sathorn Road, Bangrak Bangkok Thailand  
Tel: +6687 684 7110  
Email: pcollier@uscti.org

### **Jatulan, William**

Senior Regional Coordinator  
US CTI Support Program Integrator  
Suite 307 & 308, 3/F A. Geson Bldg., D. Jakosalem St.,  
Cebu City 6000 Philippines  
Tel: +639 17 3217592  
Email: wjatulan@uscti.org

### **MacPherson, Charlie**

Vice President Tetra Tech  
0306 Eaton Place, Suite 340 Fairfax  
Virginia USA  
Tel: +1 703 385 6000  
Email: charlie.macpherson@tetrattech.com

### **Mattich, Nives**

Deputy Chief of Party  
US CTI Support Program Integrator  
Chartered Square Building 29th Floor, Unit 2902  
152 North Sathorn Road, Bangrak Bangkok Thailand  
Tel: +6687 810 6228  
Email: nmattich@uscti.org

## **CTSP Regional Program Office Knight, Maurice**

Team Leader, Coral Triangle Support Partnership  
(CTSP) Regional Program Office  
One Wolter Place Building Mezzanine Floor, Jl.Wolter  
Monginsidi No.63B, Kebayoran Baru Jakarta 12180  
Indonesia  
Tel: +62 811 9200 233  
Email: Maurice.Knight@wwfus.org

### **Deeks, Payton**

Deputy Chief of Party, Coral Triangle Support  
Partnership (CTSP) Regional Program Office  
One Wolter Place Building Mezzanine Floor, Jl.Wolter  
Monginsidi No.63B, Kebayoran Baru Jakarta 12180  
Indonesia  
Tel: +62-21 7394 457  
Email: Payton.Deeks@wwfus.org

### **Lumbantobing, Sharon**

Communications Specialist, Coral Triangle Support  
Partnership (CTSP) Regional Program Office  
One Wolter Place Building Mezzanine Floor, Jl.Wolter  
Monginsidi No.63B, Kebayoran Baru Jakarta 12180  
Indonesia  
Tel: +62-21 7394 457  
Email: Sharon.Lumbantobing@wwfus.org

## **AUSTRALIA**

### **Bover, Travis**

Director Department of the Environment, Water,  
Heritage and the Arts (DEWHA) Marine Policy  
Development Australian Government GPO Box 787  
Canberra 2601 Australia  
Tel: +61 2267 425 25  
Email: Travis.Bover@environment.gov.au

### **Marjimi, Didi**

Email: Didi.Marjimi@ausaid.gov.au

## **ADB**

### **Drilon, Marilou**

Natural Resources Economist Southeast Asia  
Department Asian Development Bank 6 ADB Avenue,  
Mandaluyong City Metro Manila 1550 Philippines  
Tel: +632 632 6509, +63 2 632 4444  
Email: mldrilon@adb.org

### **Morales, Emong**

Team Leader, ADB CTI-SEA  
Unit 502 Manila Luxury Condominium  
30 Pearl Drive, Ortigas Center, Pasig City  
Philippines 1600  
Tel: +632 6339052  
Email: emongmorales@gmail.com

### **Tamayo, Lea**

Consultant, ADB CT Pacific  
The Asian Development Bank  
ADB Avenue, Mandaluyong City  
Metro Manila, Philippines  
Email: ltamayo.consultant@adb.org

### **Tiller, Simon**

ADB CT Pacific  
Team Leader  
Email: stiller380@aol.com

## CONSERVATION INTERNATIONAL

### **Derfuss, Monique**

Director, Conservation International  
2011 Crystal Drive, Suite 500 Arlington  
VA 22202 USA  
Tel: +1 703 341 2642  
Email: mderfuss@yahoo.com

### **Esters, Niquole**

Senior Environment Specialist, Natural Resources  
The Global Environment Facility (GEF) USA  
Tel: +1 301 525 3135  
Email: niquole.esters@gmail.com

## THE NATURE CONSERVANCY

### **White, Alan**

Senior Scientist, The Nature Conservancy,  
923 Nu'uuanu Avenue Honolulu  
Hawaii Islands 96817USA  
Tel: 1-808 587 6218  
Email: [Alan\\_white@tnc.org](mailto:Alan_white@tnc.org)

### **Whitford, Laura**

The Nature Conservancy  
Project Policy and Communications  
Tel: +61 (7) 3214.6917  
Email: lwhitford@tnc.org

## GIZ

### **Salzer, Walter (Dr.)**

Director and Principal Adviser, BMU-GIZ,  
2B PDCP Bank Center VA Rufino corner L.P. Leviste  
Sts. Salcedo Village Makati City 1200  
Tel: +63 917 831 7107, 63 2 892-9051, 63 2 892-3374  
Email: walter.salzer@giz.de

## ATSEA

### **Wagey, Gabriel**

Climate Change Officer, ATSEA,  
The Nature Conservancy-PNG  
P.O. Box 408 Manus Province PNG  
Tel: +675 9709368  
Email: GabrielW@unops.org

## UNDP

### **Iwan Kurniawan**

UNDP Indonesia, 8th floor, Menara Thamrin Building, Jl.  
M.H. Thamrin Kav 3, Jakarta, Indonesia  
Tel: +62 812 9008080  
Email: [iwan.kurniawan@undp.org](mailto:iwan.kurniawan@undp.org)

## CORAL TRIANGLE CENTER

### **Subijanto, Johannes**

Sunda-Banda & Sulu-Sulawesi Seascapes Portfolio  
Manager, Coral Triangle Center,  
The Nature Conservancy Graha Iskandarsyah 3rd floor

Jl.Raya Iskandarsyah, No.66 C Kebayoran Baru Jakarta  
Selatan Indonesia  
Tel: +62 21 7279 2043  
Email: jsbijanto@coraltrianglecenter.org

### **Widodo, Hesti**

Training and Learning Manager  
Coral Triangle Center  
Tel: 6282111637144  
Email: hwidodo@coraltrianglecenter.org

## VSO

### **Cullinane, Russ**

Adviser, Climate Change Programme Development and  
Funding  
VSO International  
Tel: +62 811 295 395  
Email: Russell.Cullinane@vsoint.org

## INDONESIA CTI-NCC

### **Nikijuluw, Victor**

Executive Secretary, Indonesia CTI-NCC  
Ministry of Marine Affairs and Fisheries  
Mina Bahari III Building 7th Fl., Medan Merdeka Timur 16  
Jakarta Pusat DKI Jakarta 10110 Indonesia  
Tel: +62 21 3860532  
Email: nnc\_ctiindonesia@yahoo.com

### **Sapari, Agus**

Ministry of Marine Affairs and Fisheries  
Mina Bahari III Building 7th Fl., Medan Merdeka Timur  
16 Jakarta Pusat DKI Jakarta 10110 Indonesia  
Tel: +62 817 801 805  
Email: stefagsa@gmail.com

### **Budiastuti, Tri Iswari**

Coordinator, Indonesia CTI-NCC,  
Ministry of Marine Affairs and Fisheries  
Mina Bahari III Building 7th Fl., Medan Merdeka Timur 16  
Jakarta Pusat DKI Jakarta 10110 Indonesia  
Tel: +62 811 1891023  
Email: iswari2301@gmail.com

### **Seroja, Lola Dwi Pahlevi**

Policy Analyst for Asia Pacific Cooperation,  
CTI-CFF CMWG/FRWG  
Ministry of Marine Affairs and Fisheries  
Mina Bahari III Building 7th Fl., Medan Merdeka Timur 16  
Jakarta Pusat DKI Jakarta 10110 Indonesia  
Tel: +62 811 936117  
Email: lolaseroja@yahoo.com

### **Pratama, Satya**

Assistant Deputy Director for Asia and Pacific  
Cooperation,  
Ministry of Marine Affairs and Fisheries  
Mina Bahari III Building 7th Fl., Medan Merdeka Timur 16  
Jakarta Pusat DKI Jakarta 10110 Indonesia  
Tel: 21 351 3308 / 386 4293  
Email: brateral.puskita@gmail.com

### **Agung Tri Prasetyo**

CTI-CFF CMWG/FRWG  
Ministry of Marine Affairs and Fisheries

Mina Bahari III Building 7th Fl., Medan Merdeka Timur 16  
Jakarta Pusat DKI Jakarta 10110 Indonesia  
Tel: 21 3864293  
Email: brilaferal.pushita@gmail.com

**Parama Dawi**

CTI-CFF CMWG/FRWG

Ministry of Marine Affairs and Fisheries

Mina Bahari III Building 7th Fl., Medan Merdeka Timur 16  
Jakarta Pusat DKI Jakarta 10110 Indonesia



## APPENDIX 2: MEETING OBJECTIVES AND AGENDA

### CTI-CFF PARTNERS COORDINATION MEETING

## AGENDA

*Mercure Resort, Sanur, Bali, Indonesia, January 16-17, 2013*

*Meeting Attire: Smart casual*

The purpose of this two-day meeting is to discuss the status of partner programs supporting the CTI-CFF and to increase the coordination of activities for optimal impact and sustainability. Expected outcomes include the following:

- Understanding of current partner support projects, including timelines and mechanisms, and consensus on priority needs to be filled to ensure strengthening and sustainability of the CTI-CFF
- Clarification of continued and new support that partners can propose at the upcoming Regional Priorities Workshop
- Exploration of potential new partner/donor coordination mechanisms to align future support with CTI-CFF/CT6 priorities
- Understanding of key outcomes from recent SOM8 and MM4 and how they affect current and future CTI-CFF partners
- Understanding of what it means to be a CTI-CFF Partner, including roles and the process for admission

DAY I Wednesday January 16, 2013		Expected Outcomes
		(1) Identification of regional and CT6 priorities by Secretariat to ensure that future partner activities are aligned and supportive of critical functions. (2) Identification of priority activities that require continued support by partners.
Time	Session	Facilitator/Speakers
08:30-09:30	<b>Opening Session</b> <ul style="list-style-type: none"><li>• Welcome</li><li>• Opening Remarks by the Chairman CTI CFF IRS</li><li>• Introductions</li><li>• Review of Meeting Objectives, Ground Rules and Expectations</li></ul>	Lida Pet Soede, WWF Dr Sudirman Saad Facilitator: Charlie MacPherson
09:30-10:15	Update from the Secretariat on <b>priorities, progress and plans for 2013</b>	Dr. Suseno, CTI-CFF IRS
10:15-10:30	Coffee Break	

10:30-11:15	<p><b>Overview of the partner landscape</b>, including existing and emerging programs, procurement mechanisms, timelines and types of support, referencing materials provided to participants in advance.</p> <p>Outline of process for subsequent sessions</p> <ul style="list-style-type: none"> <li>Partner Updates (5 minutes each): Existing and emerging projects, procurement, timeframes</li> </ul>	<p>Charlie MacPherson</p> <p>Each partner: US, Australia, ADB, GEF, CI, TNC, WWF</p>
11:15-12:15	<p><b>Presentation of Needs Analysis</b> on partner projects and support to of CTI-CFF Coordination Structure capacity and implementation of the RPOA, and Implementation and Transition Roadmaps</p>	<p>Peter Collier, US CTI Presenter: M. Eko Rudianto and Anang Noegroho, CTI-CFF IRS</p>
12:15-13:15	Lunch	
13:15-15:30	<p><b>Facilitated Discussion to Review Needs Analysis and Build Consensus on Priority Gaps to Be Funded: Part I: Support to Institutional Capacity and Coordinating Structures</b></p> <ul style="list-style-type: none"> <li>Senior Officials, Council of Ministers, Leaders</li> <li>Interim Regional Secretariat / Transition Roadmap</li> <li>Governance Working Groups: CMWG, FRWG, MEWG</li> <li>Thematic Technical Workings Groups</li> <li>National CTI Coordinating Committees</li> </ul>	Charlie MacPherson
15:30-15:45	Coffee break	
15:45-17:30	<p><b>Facilitated Discussion to Review Needs Analysis and Build Consensus on Priority Needs to Be Funded, Part I</b> (continued)</p>	Charlie MacPherson
18:30	Dinner hosted by US CTI	
<p><b>DAY 2</b> <b>Thursday</b> <b>January 17, 2013</b></p>		
<p><b>Expected Outcomes</b></p> <p>(1) Introduction of new potential CTI-CFF partners and their interests in providing support, and</p> <p>(2) Agreement on designs and coordination mechanisms for future CTI-CFF partner support to address priority needs.</p>		
<b>Time</b>	<b>Session</b>	<b>Facilitator/Speakers</b>
08:30-9:00	<b>Summary of Day 1 and outline of goals for Day 2</b>	Charlie MacPherson
9:00-9:30	<b>RPOA Implementation and Regional Priorities</b>	M. Eko Rudianto

09:30-10:15	<p><b>Facilitated Discussion to Review Needs Analysis and Build Consensus on Priority Gaps to Be Funded: Part 2: Support to RPOA/NPOA Implementation</b></p> <ul style="list-style-type: none"> <li>• Priority Seascapes Designated and Effectively Managed</li> <li>• EAFM and Other Marine Resources Fully Applied</li> <li>• MPAs Established and Effectively Managed</li> </ul>	Charlie MacPherson
10:15-10:30	Break	
10:30-11:30	<p><b>Facilitated Discussion to Review Needs Analysis and Build Consensus on Priority Needs to Be Funded, Part 2</b> (continued)</p> <ul style="list-style-type: none"> <li>• CCA Measures Achieved</li> <li>• Threatened Species Status Improving</li> <li>• Cross-Cutting Themes/Other</li> </ul>	Charlie MacPherson
11:30-12:30	<b>New Partners and Opportunities for Engagement in CTI-CFF</b>	IRS Representative Charlie MacPherson
12:30-13:30	Lunch	
13:30-14:45	<p><b>Support to Coordinating Implementation Regional Priority Actions</b></p> <ul style="list-style-type: none"> <li>• Summary achievement of the implementations of regional priority actions (2010 -2012)</li> <li>• CTI Implementation Roadmap (2013)</li> <li>• Support and Preparations for Regional Priorities Coordination Workshop</li> </ul>	Presenter: Dr Darmawan//Dr. Hendra Siry  Facilitator: Charlie MacPherson
14:45-15:00	Coffee Break	
15:00-15:45	Facilitated Partner discussion to review CTI-CFF partner criteria and <b>explore how partner/donor support needs</b> will be coordinated	Facilitator: Charlie MacPherson

15:45-16:30	<b>Confirm agreements and identify next steps</b> for strategic institutional support to the CTI-CFF	Facilitator: Charlie MacPherson
16:30-17:00	Closing Remarks	Dr Sudirman Saad

**APPENDIX 3: CTI-CFF PARTNER PROJECT OVERVIEW: SUMMARY TABLE OF REGIONAL CTI-CFF AREAS OF SUPPORT BY EXISITNG PARTNERS**

I	CTI-CFF AREA OF SUPPORT	PARTNER/PERIOD OF SUPPORT						NOTES
		●='13, ◆='14, ■='15, ○='16, ➔=Indefinitely						
		USA	AUS	ADB/ GEF	CI	TNC	WWF	
<b>I</b>	<b>SUPPORT TO CTI INSTITUTIONAL CAPACITY AND COORDINATING STRUCTURES</b>							
<b>1</b>	<b>Senior Official, Council of Ministers, Leaders</b>							
1.1	CTI Leaders and Summit Meetings	●		◆■○		◆■	➔	
1.2	CTI Council of Minister and CTI COM Chair					◆■	➔	
1.3	CTI Senior Officials Meetings	●				◆■	➔	
<b>2</b>	<b>Interim Regional Secretariat</b>							
2.1	Task 1. Coordinate and Support CTI-CFF Bodies and Partners	●		◆■○			➔	
2.2	Task 2. Coordinate the Dev of a Regional Agenda for CTI-CFF	●				◆●	➔	
2.3	Task 3. Conduct Communications and Outreach	●					➔	
2.4	Task 4. Maintain Information Management Systems	●		●		●		
2.5	Task 5. Maintain a Regional Monitoring and Evaluation System	●		●		●	➔	
2.6	Task 6. Coordinate the Development of Reports	●		●				
2.7	Task 7. Coordinate Implementation of the Transition Roadmap (Establishment of Permanent Secretariat)	●	➔			●	➔	
<b>3</b>	<b>Governance Working Groups</b>							
3.1	Coordination Mechanisms Working Group (CMWG)	●	➔			◆■	➔	
3.2	Financial Resources Working Group (FRWG)	●		●		◆■	➔	
3.3	Monitoring & Evaluation Working Group (MEWG)	●		●		●	➔	
<b>4</b>	<b>Thematic Technical Working Groups</b>							
4.1	Seascapes TWG		◆■					
4.2	EAFM TWG	●		●		●	➔	
4.3	MPA / Threatened Species TWG	●				●	➔	
4.4	CCA TWG	●				●	➔	
4.5	Capacity Development / Cross-Cutting TWG	●		●				
<b>5</b>	<b>National CTI Coordinating Committees</b>							
5.1	Indonesia	●		◆■○		◆	➔	
5.2	Malaysia	●		◆■○			➔	
5.3	Papua New Guinea	●		◆■		●	➔	
5.4	Philippines	●		◆■○			➔	
5.5	Solomon Islands	●	●	●			➔	
5.6	Timor-Leste	●		◆■				
<b>II</b>	<b>SUPPORT TO RPOA / NPOA IMPLEMENTATION</b>							
<b>6</b>	<b>Goal 1: Priority seascapes designated and effectively managed</b>		●	◆■○			➔	
<b>7</b>	<b>Goal 2: Ecosystem Approach to Management of Fisheries (EAFM) and Other Marine Resources Fully Applied</b>	●		◆■○		●	➔	
<b>8</b>	<b>Goal 3: Marine Protected Areas (MPAs) Established and Effectively Managed</b>	●	◆	◆■○		◆■	➔	
<b>9</b>	<b>Goal 4: Climate Change Adaptation Measures Achieved</b>	●	●	◆■○		●	➔	
<b>10</b>	<b>Goal 5: Threatened Species Status Improving</b>					●	➔	
<b>11</b>	<b>Cross-Cutting Themes / Other</b>							
11.1	Regional Business Forum	●					➔	
11.2	Local Governance and Learning Networks	●	●			●		
11.3	Integrated Toolkit	●				●		